



What Governors Need to Know: Highlights of State Education Systems

Updated by Kyle Zinth and Melody Bush

December 2010

Sources for each column are listed at the end of this document. This report contains three sections, organized as follows:

- Table 1: Major State Policies
- Summary Charts
- Table 2: Select State Data

Sources for all data points follow Table 2.

Table 1: Major State Policies

State	Districts Must Offer Full-Day Kindergarten	Compulsory School Ages	Charter School Laws	Exit Exams in Effect or Pending Implementation	State has a P-16 Council	How Many of the 10 Elements of State Data System	State has Open-Enrollment Policy	Who Appoints State Superintendent?	Who Selects State Board?
Alabama	Yes	7-17	No	Yes	No	10	No	State Board	Elected
Alaska	No	7-16	Yes	Yes	No	7	Yes	State Board	Governor
Arizona	No	6-16 or completion of grade 10	Yes	Yes	Yes	7	Yes	Elected	Governor
Arkansas	Yes	5-17	Yes	Yes	Unclear	10	Yes	State Board	Governor
California	Allowed for Early Primary Programs	6-18	Yes	Yes	Yes	8	Yes	Elected	Governor
Colorado	No	6-17	Yes	No	Yes	7	Yes	State Board	Elected
Connecticut	No	5-18	Yes	No	Yes	7	Yes	State Board	Governor
Delaware	Yes	5-16	Yes	No	Yes	10	Yes	Governor	Governor

State	Districts Must Offer Full-Day Kindergarten	Compulsory School Ages	Charter School Laws	Exit Exams in Effect or Pending Implementation	State has a P-16 Council	How Many of the 10 Elements of State Data System	State has Open-Enrollment Policy	Who Appoints State Superintendent?	Who Selects State Board?
District of Columbia	No	5-18	Yes	No	No	4	No	Mayor	Board advisory only
Florida	No	6-16	Yes	Yes	No†	10	Yes	Governor	Governor
Georgia	Yes	6-16	Yes	Yes	Yes	10	Yes	Elected	Governor
Hawaii	No	6-18	Yes	No	Yes	8	Yes	State Board	Governor
Idaho	No	7-16	Yes	Yes	No†	3	Yes	Elected	Governor
Illinois	No	7-17	Yes	No	Yes	8	Yes	State Board	Governor
Indiana	No	7-18	Yes	No	Yes	8	Yes	Elected	Governor
Iowa	No	6-16	Yes	No	No†	7	Yes	Governor	Governor
Kansas	No	7-18	Yes	No	Yes	8	Yes	State Board	Elected
Kentucky	No	6-16	No	No	Yes	10	Yes	State Board	Governor
Louisiana	Yes	7-18	Yes	Yes	Yes	10	Yes	State Board	Appointed and elected
Maine	No	7-17	No	No	Unclear	7	Yes	Governor	Governor
Maryland	Yes	5-16	Yes	Yes	Yes	7	No	State Board	Governor
Massachusetts	No	6-16	Yes	Yes	No	8	Yes	State Board	Governor
Michigan	No	6-18	Yes	No	No†	8	Yes	State Board	Elected
Minnesota	No	7-16	Yes	Yes	Yes	8	Yes	Governor	No Board
Mississippi	Yes	6-17	No	Yes	Yes	10	Yes	State Board	Appointed by multiple authorities
Missouri	No	7-17	Yes	No	Yes	8	Yes	State Board	Governor
Montana	No	7-16	No	No	Unclear	6	Yes	Elected	Governor
Nebraska	No	6-18	No	No	Yes	7	Yes	State Board	Elected
Nevada	No	7-18	Yes	Yes	Yes	8	Yes	State Board	Elected
New Hampshire	No	6-18 (effective 7/01/09)	Yes	No	Yes	6	Yes	Governor	Governor
New Jersey	No	6-16	Yes	Yes	No	8	Yes	Governor	Governor
New Mexico	No	5-18	Yes	Yes	No	9	Yes	Governor	Board advisory only
New York	No	6-16	Yes	Yes	No†	6	Yes	State Board	Legislature
North Carolina	Yes	7-16	Yes	Yes	Yes	8	No	Elected	Governor
North Dakota	No	7-16	No	No	No	7	Yes	Elected	Governor
Ohio	Yes	6-18	Yes	Yes	No	9	Yes	State Board	Appointed and elected
Oklahoma	No	5-18	Yes	Yes (class of 2012)	Unclear	8	Yes	Elected	Governor

State	Districts Must Offer Full-Day Kindergarten	Compulsory School Ages	Charter School Laws	Exit Exams in Effect or Pending Implementation	State has a P-16 Council	How Many of the 10 Elements of State Data System	State has Open-Enrollment Policy	Who Appoints State Superintendent?	Who Selects State Board?
Oregon	No	7-18	Yes	No	No	7	Yes	Elected	Governor
Pennsylvania	No	8-17	Yes	†	Yes	8	Yes	Governor	Governor
Rhode Island	No	6-16	Yes	No	Yes	7	Yes	State Board	Governor
South Carolina	Yes	5-17	Yes	Yes	Yes	8	Yes	Elected	Legislature
South Dakota	No	6-18 (effective 7/01/09)	No	No	No	7	Yes	Governor	Governor
Tennessee	No	6-17	Yes	Yes	Yes	10	Yes	Governor	Governor
Texas	No	6-18	Yes	Yes	Yes	9	Yes	Governor	Elected
Utah	No	6-18	Yes	No	Yes	10	Yes	State Board	Elected
Vermont	No	6-16 or completion of grade 10	No	Yes	Yes	8	Yes	State Board	Governor
Virginia	No	5-18	Yes	Yes	Unclear	8	No	Governor	Governor
Washington	No	8-18	No	Yes	No	10	Yes	Elected	Appointed by multiple authorities
West Virginia	Yes	6-17	No	No	Yes	9	Yes	State Board	Governor
Wisconsin	No	6-18	Yes	No	Yes	7	Yes	Elected	No board
Wyoming	No	7-16 or completion of grade 10	Yes	No	Yes	10	Yes	Elected	Governor

Territory	Districts Must Offer Full-Day Kindergarten	Compulsory School Ages	Charter School Laws	Exit Exams in Effect or Pending Implementation	State has a P-16 Council	How Many of the 10 Elements of State Data System	Open Enrollment	Who Appoints State Superintendent	Who Selects State Board
American Samoa	--	6-18	--	No	--	--	--	--	--
Guam	--	--	--	--	--	--	--	--	--
Puerto Rico	No	--	Yes	No	--	8	Yes	--	--
U.S. Virgin Islands	No	--	--	--	--	--	--	--	--

† State has consolidated most or all governance of public education into one or two agencies, or boards that essentially perform the function of a P-16 or P-20 council.

¹ The state board rule as adopted does not require all students to pass state-developed “Keystone Exams” to graduate from high school, but if the student is in a district that has adopted Keystone Exams as part of its graduation requirements, then the student is subject to that requirement.

Summary Charts

Chart 1: Who Appoints Chief?

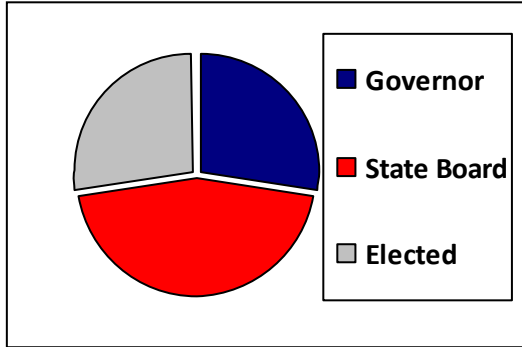


Chart 2: Who Appoints Board?

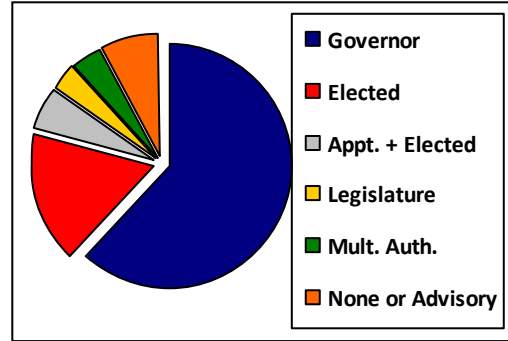


Chart 3: State has P-16 Council?

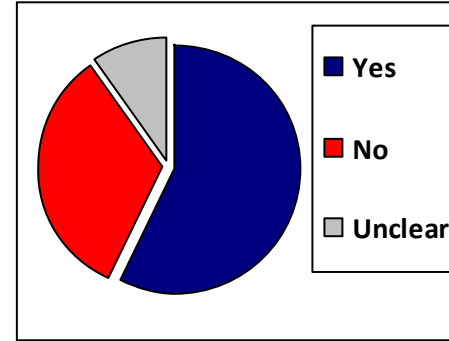


Chart 3: Low Comp. School Age

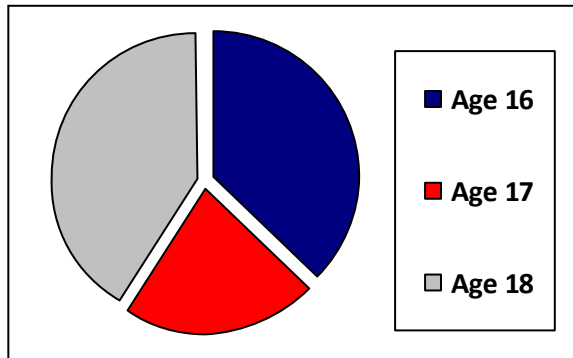
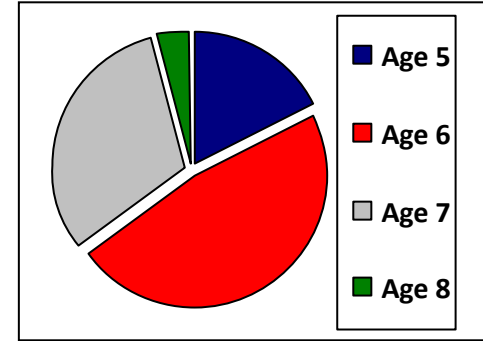


Chart 4: Compulsory School Age: Upper

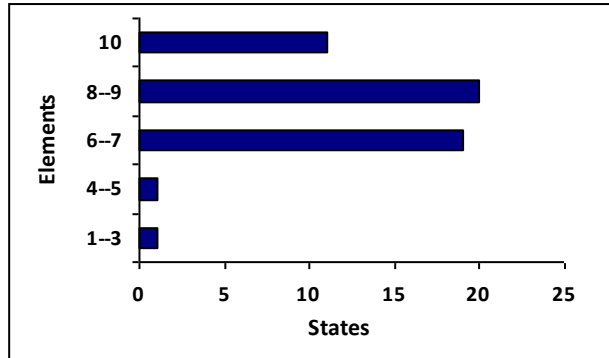


Chart 5: How Many Elements of State Data Systems?

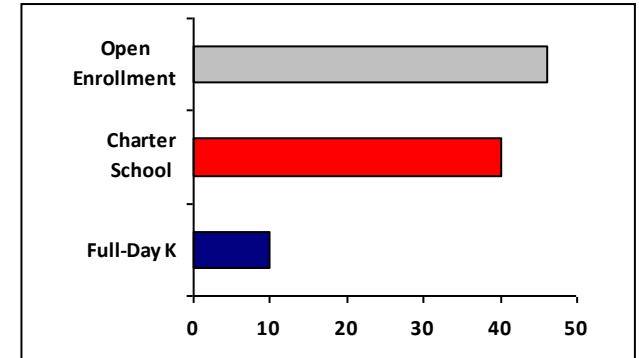


Chart 6: States with Selected Policies

Table 2: Select State Data

State	Number of Regular Districts in 2007-08	Total Number of Students in 2007-08	Average # of Students per District in 2007-08	Per-Student Spending (\$) in 2007-08	Number of the Nation's 100 Largest School Districts in Each State in 2006-07	Number of Free or Reduced-Price-Lunch-Eligible Students 2004-05 (%)	Percent of K-12 Revenue from State Sources in 2008-09	State and Local School Revenue (\$) per \$1,000 of Personal Income in 2006-07	Average Salaries (\$) for Classroom Teachers in 2009-10
Alabama	134	743,349	5,547	9,194	1	376,494	61.1	49	47,156
Alaska	53	130,624	2,464	10,705	1	38,058	63.5	43	59,729
Arizona	238	987,188	4,147	5,685	2	500,442	52.4	37	46,952
Arkansas	245	476,110	1,943	9,591	--	240,352	55.8	45	49,051
California	1,026	6,264,831	6,106	8,586	13	3,100,883	55.0	42	70,458
Colorado	178	796,824	4,476	9,335	4	241,569	42.8	34	49,505
Connecticut	169	548,428	3,245	13,533	--	‡	37.9	41	64,350
Delaware	19	114,062	6,003	12,521	--	42,411	62.8	43	59,636
District of Columbia	1	58,191	58,191	17,109	1	50,455	N/A	21	64,548
Florida	67	2,645,680	39,487	9,077	14	1,249,976	34.2	37	46,912
Georgia	180	1,646,010	9,144	9,564	6	743,797	43.3	51	54,274
Hawaii	1	179,897	179,897	11,800	1	76,597	86.5	42	58,168
Idaho	115	265,844	2,311	7,535	--	98,743	67.1	38	46,283
Illinois	870	2,099,118	2,412	10,947	1	785,978	27.5	37	62,077
Indiana	294	1,033,329	3,514	9,432	--	365,374	52.5	44	49,986
Iowa	364	485,114	1,332	8,922	--	148,429	47.9	43	50,547
Kansas	319	467,743	1,466	9,560	--	179,878	60.4	46	46,957
Kentucky	174	666,019	3,827	9,288	1	--	58.4	42	48,354
Louisiana	69	651,377	9,440	10,017	1	445,808	44.8	38	50,349
Maine	290	194,953	672	12,665	--	64,301	38.5	49	46,106
Maryland	24	845,700	35,237	11,278	6	277,669	39.4	39	65,333
Massachusetts	352	799,227	2,270	13,706	1	270,651	37.6	42	68,000
Michigan	552	1,576,637	2,856	10,815	1	584,773	58.8	52	57,958
Minnesota	340	806,343	2,371	10,560	--	247,520	75.8	41	53,069
Mississippi	152	493,302	3,245	7,175	--	318,743	53.4	40	45,644
Missouri	524	900,195	1,717	8,466	--	353,559	31.5	42	45,317
Montana	421	142,700	338	9,001	--	49,367	47.8	38	45,759
Nebraska	254	290,912	1,145	8,726	--	99,325	38.5	37	46,080
Nevada	18	429,362	23,853	7,292	2	‡	32.9	28	51,524
New Hampshire	177	200,274	1,131	11,672	--	34,162	37	42	51,365

State	Number of Regular Districts in 2007-08	Total Number of Students in 2007-08	Average # of Students per District in 2007-08	Per-Student Spending (\$) in 2007-08	Number of the Nation's 100 Largest School Districts in Each State in 2006-07	Number of Free or Reduced-Price-Lunch-Eligible Students 2004-05 (%)	Percent of K-12 Revenue from State Sources in 2008-09	State and Local School Revenue (\$) per \$1,000 of Personal Income in 2006-07	Average Salaries (\$) for Classroom Teachers in 2009-10
New Jersey	616	1,359,949	2,207	15,542	--	--	35.5	48	64,809
New Mexico	89	329,045	3,697	9,619	1	189,523	70.4	47	46,401
New York	697	2,730,427	3,917	15,286	1	515,130	45.2	44	71,470
North Carolina	116	1,425,076	12,285	8,609	5	624,500	57.2	34	48,648
North Dakota	192	94,959	494	8,752	--	29,204	37.3	36	42,964
Ohio	614	1,743,920	2,840	8,829	2	572,202	45.4	39	55,931
Oklahoma	539	641,682	1,190	7,755	--	339,012	53.7	36	44,143
Oregon	195	562,545	2,884	9,705	--	225,735	51.4	40	55,224
Pennsylvania	501	1,718,588	3,430	11,659	1	516,075	38.2	46	58,124
Rhode Island	32	133,066	4,158	15,914	--	50,172	40.5	48	59,636
South Carolina	86	710,982	8,267	9,182	1	367,133	50.7	47	48,417
South Dakota	168	121,606	723	8,481	--	36,845	32.2	34	35,136
Tennessee	136	963,264	7,082	8,022	3	--	45.6	32	46,290
Texas	1,033	4,581,008	4,434	8,420	18	2,098,348	46.4	44	47,157
Utah	40	556,314	13,907	5,734	4	160,051	52	39	43,068
Vermont	292	89,048	304	13,915	--	24,592	86.5	55	49,053
Virginia	134	1,217,805	9,088	10,512	6	374,532	40.2	42	49,999
Washington	295	1,029,576	3,490	9,304	--	368,022	63	35	53,653
West Virginia	55	281,735	5,122	10,411	--	141,053	59.5	50	45,959
Wisconsin	426	867,929	2,037	10,672	1	‡	49.7	47	52,644
Wyoming	48	85,991	1,791	13,999	--	27,141	56.4	56	55,694
Total	13,924	48,183,858	(average)	(median)	99	17,647,584	(average)	(median)	

Territories	Number of Regular Districts in 2007-08	Total Number of Students in 2007-08	Average # of Students per District in 2001-02	Per-Student Spending (\$) in 2003-04	Number of the Nation's 100 Largest School Districts in Each State in 2001-02	Number of Free or Reduced-Price-Lunch-Eligible Students 2004-05	Percent of K-12 Revenue from State Sources in 2002-03	State and Local School Revenue (\$) in 2000-01 per \$1,000 of Personal Income in 2001	Average Salaries (\$) for Classroom Teachers in 2003-04
American Samoa	1	--	--	--	--	16,033	--	--	--
Guam	1	--	--	--	--	13,781	--	--	--
Puerto Rico	1	526,565	526,565	--	1	461,842	--	--	--
U.S. Virgin Islands	2	15,903	7,951	--	--	--	--	--	--
Total	5	542,486	N/A	--	1	N/A	--	--	--

-- Not available.

‡ Reporting standards not met, data were missing for more than 20% of schools or districts within a state, or for more than 15% of all schools or districts nationally.

Sources:

Districts Must Offer Full-Day Kindergarten: Bush, Melodye and Ryan, Molly. *State Kindergarten Statutes*, Education Commission of the States, December 2010.

<http://www.ecs.org/clearinghouse/82/58/8258.pdf>.

Compulsory School Ages: Bush, Melodye. *Compulsory School Age Requirements*. Education Commission of the States, June 2010.

<http://www.ecs.org/clearinghouse/86/62/8662.pdf>

Charter School Laws: National Alliance for Public Charter Schools Web site. <http://www.publiccharters.org/charterlaws>. [Accessed 4/1/2010.]

Exit Exams in Effect or Pending Implementation: Colasanti, Michael. *Exit Exams: State Requires Passage of Exit Exam for High School Graduation*. Education Commission of the States, June 2007. <http://mb2.ecs.org/reports/Report.aspx?id=1359>.

State Has a P-16 Council: Dounay Zinth, Jennifer. *P-16/P-20 Councils*. Education Commission of the States, April 2010. <http://mb2.ecs.org/reports/Report.aspx?id=910>.

How Many of the 10 Elements of State Data System: Data Quality Campaign Web site. <http://www.dataqualitycampaign.org/survey/compare/elements>. [Accessed 4/1/2010.]

Open Enrollment: *Open Enrollment: 50 State Report*. Education Commission of the States. <http://mb2.ecs.org/reports/Report.aspx?id=268>.

Who Appoints Superintendent: Fulton, Mary. *State Education Governance Models*. Education Commission of the States, March 2008.

<http://www.ecs.org/clearinghouse/77/78/7778.pdf>.

Who Selects State Board: Fulton, Mary. *State Education Governance Models*. Education Commission of the States, March 2008. <http://www.ecs.org/clearinghouse/77/78/7778.pdf>.

Number of Operating Districts in 2007-08: Hoffman, Lee. *Table 2. Number of operating public elementary and secondary local education agencies and number of students in membership, by agency type and state or jurisdiction: School year 2007–08*. National Center for Education Statistics, October 2009.

<http://nces.ed.gov/pubs2010/2010305/tables.asp>.

Total Number of Students in 2007-08: Hoffman, Lee, *Table 2. Number of operating public elementary and secondary local education agencies and number of students in membership, by agency type and state or jurisdiction: School year 2007–08*, National Center for Education Statistics, October 2009.

<http://nces.ed.gov/pubs2010/2010305/tables.asp>.

Average # of Students per District in 2007-08: Calculated using *Table 2. Number of operating public elementary and secondary local education agencies and number of students in membership, by agency type and state or jurisdiction: School year 2007–08*, National Center for Education Statistics, October 2009.

<http://nces.ed.gov/pubs2010/2010305/tables.asp>.

Per-Student Spending (\$) In 2008-09: *Rankings of the States 2009 and Estimates of School Statistics 2010, Table H-9*. National Education Association, December 2009.

<http://www.nea.org/assets/docs/010rankings.pdf>.

Number of the Nation's 100 Largest School Districts in Each State in 2006-07: Tang, Jun, Sable, Jennifer and Hoffman, Lee. *Characteristics of the 100 Largest Public Elementary and Secondary School Districts in the United States: 2006–07*. National Center for Education Statistics, June 2009. <http://nces.ed.gov/pubs2009/2009342.pdf>.

Number of Free or Reduced-Price-Lunch-Eligible Students 2004-05: Sable, Jennifer and Hoffman, Lee. *Overview of Public Elementary and Secondary Students, Staff, Schools, School Districts, Revenues, and Expenditures: School Year 2004–05 and Fiscal Year 2004, Table 3*. National Center for Education Statistics, November 2006.

<http://nces.ed.gov/pubs2007/2007309.pdf>.

Percent of K-12 Revenue from State Sources 2008-09: *Rankings of the States 2009 and Estimates of School Statistics 2010, Table F-10*. National Education Association, December 2009. <http://www.nea.org/assets/docs/010rankings.pdf>.

State and Local School Revenue (\$) in 2006-07 per \$1,000 of Personal Income: *Rankings of the States 2009 and Estimates of School Statistics 2010, Summary Table F-6*. National Education Association, December 2009. <http://www.nea.org/assets/docs/010rankings.pdf>.

Average Salaries (\$) for Classroom Teachers in 2009-10: *Rankings of the States 2009 and Estimates of School Statistics 2010, Summary Table G*. National Education Association, December 2009. <http://www.nea.org/assets/docs/010rankings.pdf>.

ECS is available to work with individual states to improve education policy. For more information, please contact:

Kathy Christie

Chief of Staff

kchristie@ecs.org

303.299.3613

Kyle Zinth, Policy Analyst in the ECS Information Clearinghouse, updated this report. E-mail: kzinth@ecs.org

© 2010 by the Education Commission of the States (ECS). All rights reserved. ECS is a nonprofit, nationwide organization that helps state leaders shape education policy.

To request permission to excerpt part of this publication, either in print or electronically, please fax a request to the attention of the ECS Communications Department, 303.296.8332 or e-mail ecs@ecs.org.

Helping State Leaders Shape Education Policy