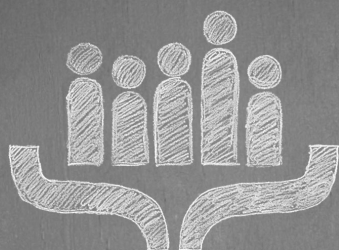
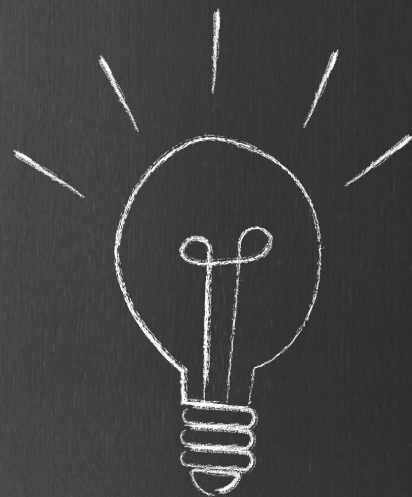


2017 National Forum ON EDUCATION POLICY


YOUR EDUCATION POLICY CONVENING.

JUNE 28-30 HOTEL DEL CORONADO
SAN DIEGO



**EDUCATION
COMMISSION
OF THE STATES**



**EDUCATION COMMISSION
OF THE STATES**
Your education policy team.

@EdCommission | #ECSNF17

Table of CONTENTS

Welcome	3
About	4
Our Space	5
Our Partners	6-8
2017 Teachers of the Year	9
Legislative Education Staff Network	10
Schedule at a Glance	11

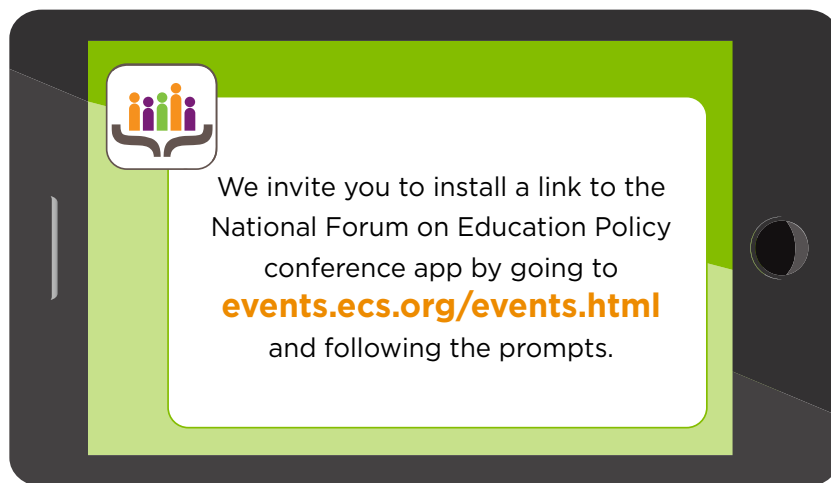
AGENDA

Pre-Forum Events	12
Wednesday, June 28 ...	12-14
Thursday, June 29	14-18
Roundtable Discussions	18-20
Friday, June 30	21-22

RECOGNITIONS

James Bryant Conant Award	23
Frank Newman Award for State Innovation	24
Corporate Award	25
Past Award Winners	26
Distinguished Senior Fellows	26-27
Session Speakers	28-40
Education Commission of the States' Staff	41

STAY Connected



DON'T FORGET TO TWEET!

Follow [@EdCommission](https://twitter.com/EdCommission) and join the National Forum on Education Policy conversation! Use the hashtag [#ECSNF17](https://twitter.com/hashtag/ECSNF17)! Follow Education Commission of the States' other social media pages:



[Twitter.com/EdCommission](https://twitter.com/EdCommission)



[Facebook.com/EdCommission](https://facebook.com/EdCommission)



[Instagram.com/Education_Commission](https://instagram.com/Education_Commission)



[LinkedIn.com/company/education-commission-of-the-states](https://linkedin.com/company/education-commission-of-the-states)

SESSION RESOURCES

Session presentations and other valuable resources are available online: bit.ly/ECSNF17Resources.

CONFERENCE WI-FI INFORMATION



WI-FI NAME: ECSNF2017

PASSWORD: EdPolicyTeam

WELCOME!

Thank you for joining us at the beautiful Hotel del Coronado for Education Commission of the States' 2017 National Forum on Education Policy. With education leaders in attendance from all 50 states plus Washington, D.C., and sessions covering today's top education policy issues, this year's convening promises to deliver three impactful days. When planning the National Forum on Education Policy, our goal is to provide you with critical knowledge on current topics, valuable insight on unique approaches to ongoing challenges, and unparalleled opportunities to personally connect with — and learn from — leaders from across the complete education spectrum. From governors, chief state school officers, legislators, as well as their respective staffs, to higher education executives, school board members and the nation's top teachers, this event provides an opportunity to learn from the great minds of others and build your professional network. We encourage you to make the most out of your 2017 National Forum on Education Policy experience and, as always, reach out to Education Commission of the States' policy team about how we can help make your time with us more valuable.

Enjoy the 2017 National Forum on Education Policy!



Steve Bullock

GOVERNOR, STATE OF MONTANA

2015-2017 Chair

Education Commission of the States



Jeremy Anderson

PRESIDENT

Education Commission of the States

NATIONAL FORUM ON EDUCATION POLICY PLANNING COMMITTEE

Special thanks and recognition go to the following Education Commission of the States Commissioners who served on the 2015-17 planning committee and helped plan this year's convening.



Chair

DOLORES GRESHAM

Chair, Education Committee

Tennessee Senate



DENNIS ROCH

New Mexico House of Representatives



JOE GARCIA

President

Western Interstate Commission

for Higher Education



JAKE YUNKER

Deputy Policy Director

Office of Oklahoma Governor Mary Fallin

ABOUT Education Commission of the States

At Education Commission of the States, we believe in the power of learning from experience. Every day, we provide education leaders with unbiased information and opportunities for collaboration. We do this because we know that informed policymakers create better education policy.

At Education Commission of the States:



We compile information on education policies from early childhood through postsecondary education so state policymakers can make informed decisions.



We regularly issue relevant and timely reports that provide education leaders with concise, factual overviews on the full spectrum of state education policies.

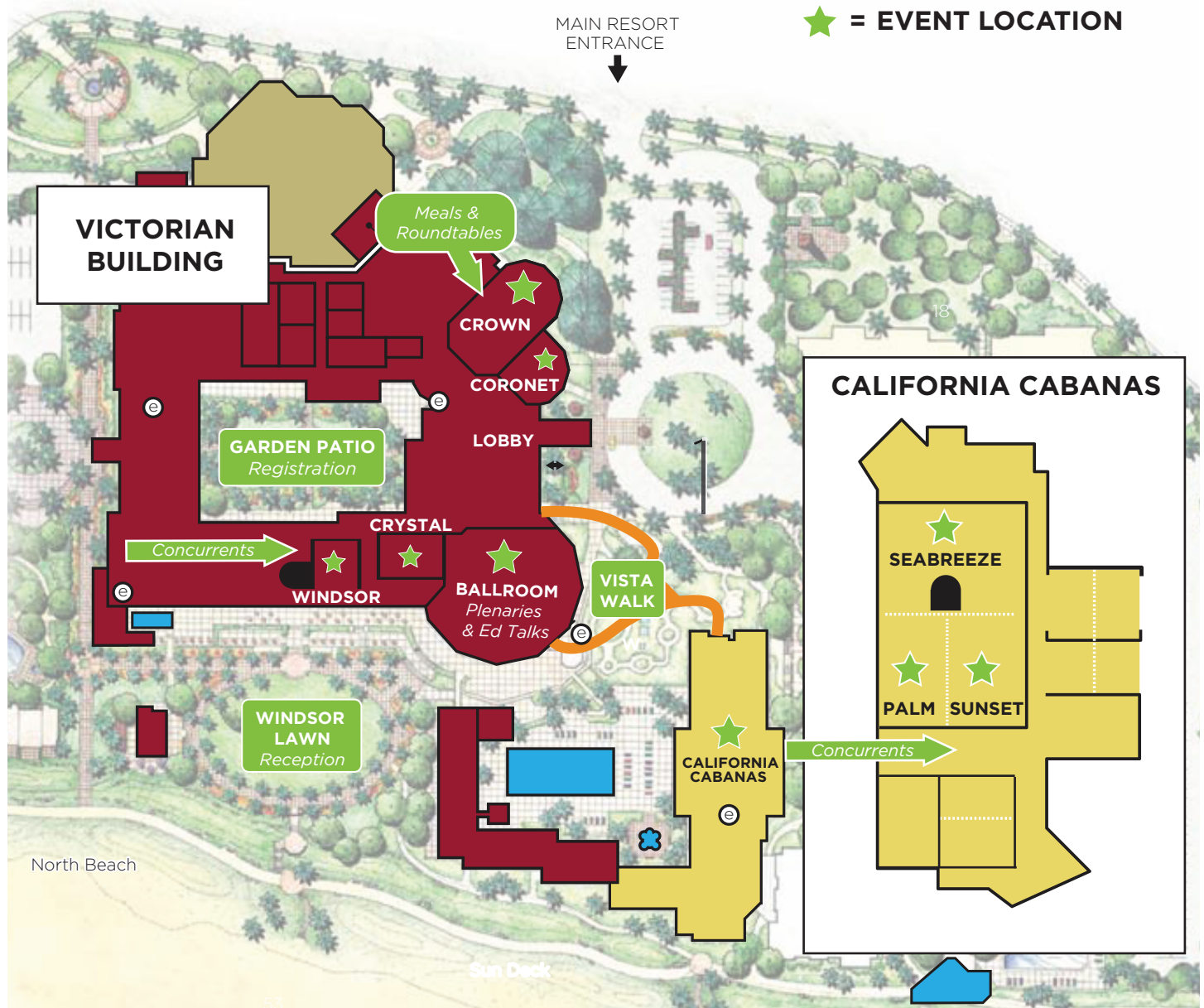


We are available to provide unbiased advice on policy plans, consult on proposed legislation and testify at legislative hearings as third-party experts.



We bring education leaders together within their states and across states to interact, collaborate and learn from each other.

Our SPACE



VICTORIAN BUILDING

BALLROOM

Plenaries & Ed Talks

CROWN

Meals & Roundtables

CORONET

Commissioner Meetings

CRYSTAL

Concurrent Sessions

WINDSOR

Concurrent Sessions

CALIFORNIA CABANAS

SEABREEZE

Concurrent Sessions

PALM

Concurrent Sessions

SUNSET

Concurrent Sessions

OUTDOOR VENUES

GARDEN PATIO

Registration

VISTA WALK

Information Desk and access to California Cabanas

WINDSOR LAWN

Reception

ⓔ Elevators

Our PARTNERS

PLATINUM

BILL & MELINDA
GATES foundation

Guided by the belief that every life has equal value, the Bill & Melinda Gates Foundation works to help all people lead healthy, productive lives. In developing countries, it focuses on improving people's health and giving them the chance to lift themselves out of hunger and extreme poverty. In the United States, it seeks to ensure all people — especially those with the fewest resources — have access to the opportunities they need to succeed in school and life. For more information, please visit www.gatesfoundation.org.



Strada Education Network, formerly USA Funds, is a new kind of nonprofit organization that takes a fresh approach to improving the college-to-career connection. Through a unique combination of strategic philanthropy, research and insights, and innovative solutions, Strada Education Network advances Completion With a Purpose, building a more purposeful path for America's students to rewarding careers and fulfilling lives. Learn more at www.stradaeducation.org and follow Strada Education on Twitter @StradaEducation.



The Wallace Foundation is a national philanthropy that seeks to improve learning and enrichment for disadvantaged children and foster the vitality of the arts for everyone. For more information, please visit www.wallacefoundation.org.



The philanthropic vision of Sam and Helen Walton has driven the work of the Walton Family Foundation for nearly three decades. Their legacy is more important than ever as we accelerate our efforts to improve K-12 education for all students in America, to protect our rivers and oceans and the communities they support, and to give back to the region that first gave Sam and Helen Walton opportunity. Learn more at www.waltonfamilyfoundation.org or follow us on Twitter @waltonfamilyfdn.

GOLD



ACT is an international, mission-driven, nonprofit organization providing high-quality assessments grounded in more than 50 years of research. The ACT® test is the most widely used U.S. college admissions test, taken in 2015 by 1.9 million high school seniors. Our ACT Aspire® assessment system measures student growth from grades 3 to 10 and links to the ACT to build a complete picture of college and career readiness. More than 3 million people have earned the ACT National Career Readiness Certificate™, powered by ACT WorkKeys®, to demonstrate they have foundational workplace skills. Learn more at www.act.org.



AdvancED is a non-profit, non-partisan organization serving the largest community of education professionals in the world. Founded on more than 100 years of work in continuous improvement, AdvancED combines the knowledge and expertise of a research institute, the skills of a management consulting firm and the passion of a grassroots movement for educational change to empower pre-K to 12 schools and school systems to ensure that all learners realize their full potential. AdvancED's position as a global leader in school improvement and accreditation continues to expand by providing a national and international voice to inform and influence policy and practice on issues related to education quality. Learn more at www.advanc-ed.org.



Recognizing that an effective teacher is the most important school-based factor impacting student achievement, the National Institute for Excellence in Teaching (NIET) is committed to ensuring a highly-skilled, strongly-motivated and competitively-compensated teacher for every classroom in America. NIET supports states, districts and schools in attracting, developing, supporting and retaining high-quality human capital in order to raise achievement levels for all students. Learn more at www.niet.org.

Our PARTNERS



Pearson is the world's leading learning company, providing educational materials and services to learners of all ages around the globe. For more information, please visit www.pearsoned.com.



Scholastic Corporation (NASDAQ: SCHL) is the world's largest publisher and distributor of children's books and a leader in educational technology and related services and children's media. Scholastic creates quality books and ebooks, print and technology-based learning materials and programs, magazines, multimedia and other products that help children learn both at school and at home. The company distributes its products and services worldwide through a variety of channels, including school-based book clubs and book fairs, retail stores, schools, libraries, on-air and online at www.scholastic.com.



The State Farm® mission is to help people manage the risks of everyday life, recover from the unexpected and realize their dreams. We achieve our mission through the products and services we offer, as well as through our involvement in and commitment to the community. We make it our business to be like a good neighbor, helping to improve the quality of life in the communities where our associates live and work. For more information, please visit www.statefarm.com.

SILVER



KnowledgeWorks is a social enterprise focused on ensuring that every student experiences meaningful personalized learning that allows him or her to thrive in college, career and civic life. By offering a portfolio of innovative education approaches and advancing aligned policies, KnowledgeWorks seeks to activate and develop the capacity of communities and educators to build and sustain vibrant learning ecosystems that allow each student to thrive. Learn more at www.knowledgeworks.org.



MetaMetrics® is focused on improving education for students of all ages. The organization's distinctive frameworks for reading and mathematics bring meaning to measurement and are used by millions to differentiate instruction, individualize practice, improve learning and measure growth across all levels of education. For more information, please visit www.lexile.com and www.quantiles.com.



Founded in 1975, Microsoft (Nasdaq "MSFT") is the worldwide leader in software, services, devices and solutions that help people and businesses realize their full potential. For more information, please visit www.microsoft.com.



NWEA™ is a research-based, not-for-profit organization that supports students and educators worldwide by creating assessment solutions that precisely measure growth and proficiency — and provide insights to help tailor instruction. For 40 years, NWEA has developed Pre-K-12 assessments and professional learning offerings to help advance all students along their optimal learning paths. Our tools are trusted by educators in 140 countries and more than half of the schools in the U.S.



Renaissance Learning is a leading provider of cloud-based assessment and teaching and learning solutions that fit the K-12 classroom, improve school performance and accelerate learning for all. Renaissance Learning enables educators to deliver highly differentiated and timely instruction while driving personalized student practice in reading, writing and math, every day. For more information, please visit www.renaissance.com.

Our PARTNERS



Some educators see data as facts and figures. But it's more than that. It's the lifeblood of your schools. It contains history. And it can tell you something about the future. SAS helps you make sense of the data. As the leader in education analytics software and services, SAS transforms your data into insights that give you a fresh perspective on your students and schools. You can identify what's working. Fix what isn't. And discover new opportunities. Please visit www.sas.com/k12.



At ETS, we advance quality and equity in education for people worldwide by creating assessments based on rigorous research. ETS serves individuals, educational institutions and government agencies by providing customized solutions for teacher certification, English language learning, and elementary, secondary and postsecondary education, and by conducting education research, analysis and policy studies. Founded as a nonprofit in 1947, ETS develops, administers and scores more than 50 million tests annually — including the TOEFL® and TOEIC® tests, the GRE® tests and The Praxis Series® assessments — in more than 180 countries, at more than 9,000 locations worldwide. For more information, visit www.ets.org.

BRONZE



AVID, Advancement Via Individual Determination, is a global nonprofit organization that operates with one guiding principle: Hold students accountable to the highest standards, provide academic and social support, and they will rise to the challenge. AVID's kindergarten through higher education system brings research-based curriculum and strategies to students each day that develop critical thinking, literacy and math skills across all content areas. For more than 30 years, AVID has prepared students for college readiness and success. It now impacts the lives of almost 1.3 million students throughout the United States and the world. For more information, please visit www.avid.org.



Education Networks of America® is the leading provider of Infrastructure as a Service (IaaS) solutions to K-12 schools, higher education institutions and libraries. Since 1996, we have worked with our customers to ensure they have the robust and reliable high-capacity broadband, Wi-Fi/LAN, communication, and cloud solutions they require to meet the present and emerging technology needs of the communities they serve. For more information, please visit www.ena.com.



Questar Assessment Inc. is a K-12 assessment solutions provider focused on building a bridge between learning and accountability. We take a fresh and innovative approach to meaningful assessment design, delivery, scoring, analysis and reporting. And we are reimagining how assessments can empower educators by giving them the insights they need to improve instruction and fully prepare students for college or career. Our high-quality, reliable assessment products and services are easily scaled and tailored to meet the specific needs of states and districts at an unprecedented value. Educators trust our high-performing teams and dependable technology to minimize risks and ensure success for states, districts, schools and students. For more information, visit www.questarai.com.

2017 TEACHERS of the Year



Sydney Chaffee

Congratulations to the 2017 National Teacher of the Year, Sydney Chaffee, the ninth-grade humanities teacher at Codman Academy Charter Public School in Boston!

2017 Teachers of the Year

ALABAMA

Dana Elizabeth Jacobson

ALASKA

James Harris

AMERICAN SAMOA

Dana Love-Ili

ARIZONA

Michelle Doherty

ARKANSAS

Courtney Cochran

CALIFORNIA

Megan Gross

COLORADO

Sean Wybrant

CONNECTICUT

Lauren Danner

DELAWARE

Wendy Turner

DEPT. OF DEFENSE

EDUCATION

ACTIVITY

Kelisa Wing

DISTRICT OF

COLUMBIA

Elizabeth Dewhurst

FLORIDA

Jessica Solano

GEORGIA

Casey Bethel

GUAM

Gracelle Canar

HAWAII

Sung Man Park

IDAHO

Mary Spiker

ILLINOIS

Ricardo Castro

INDIANA

Jitka Nelson

IOWA

Michelle Vroegh

KANSAS

Jason Sickel

KENTUCKY

Ron Skillern

LOUISIANA

Joni Smith

MAINE

Tamara Ranger

MARYLAND

Athanasia Kyriakakos

MASSACHUSETTS

Sydney Chaffee

MICHIGAN

Tracy Horodyski

MINNESOTA

Abdul Wright

MISSISSIPPI

Jodi McKenzie

MISSOURI

Darbie Valenti

MONTANA

Kelly Elder

NEBRASKA

Amber Vlasnik

NEVADA

Pamela Ertel

NEW HAMPSHIRE

Tate Aldrich

NEW JERSEY

Argine Safari

NEW MEXICO

Stephanie Gurule-Leyba

NEW YORK

Amy Hysick

NORTH CAROLINA

Bobbie Cavnar

NORTH DAKOTA

Nanci Dauwen

NORTHERN MARIANA

ISLANDS

Gerard Van Gils

OHIO

Dustin Weaver

OREGON

Gloria Pereyra-Robertson

PENNSYLVANIA

Rebecca Foxwell

RHODE ISLAND

Nikos Giannopoulos

SOUTH CAROLINA

Jennifer Wise

SOUTH DAKOTA

Beth Kaltsulas

TENNESSEE

Derek Voiles

TEXAS

Allison Ashley

UTAH

Valerie Gates

VERMONT

Katherine McCann

VIRGIN ISLANDS

Dinah Browne

VIRGINIA

Toney McNair, Jr.

WASHINGTON

Camille Jones

WEST VIRGINIA

Toni Poling

WISCONSIN

Chris Gleason

WYOMING

Ryan Fuhrman

LEGISLATIVE EDUCATION STAFF NETWORK



School Funding, Choice and Teaching in the ESSA Era: A seminar for legislative education staff

Thanks to generous support from the Bill & Melinda Gates Foundation, Education Commission of the States invited nearly 40 members of the Legislative Education Staff Network (LESN) to participate in a two-day professional development seminar, which convened earlier this week. Staff heard from national experts on topics LESN identified as key areas of interest, including ESSA, school funding, school choice, and teacher recruitment and retention. Staff were also provided opportunities for networking and general professional development.

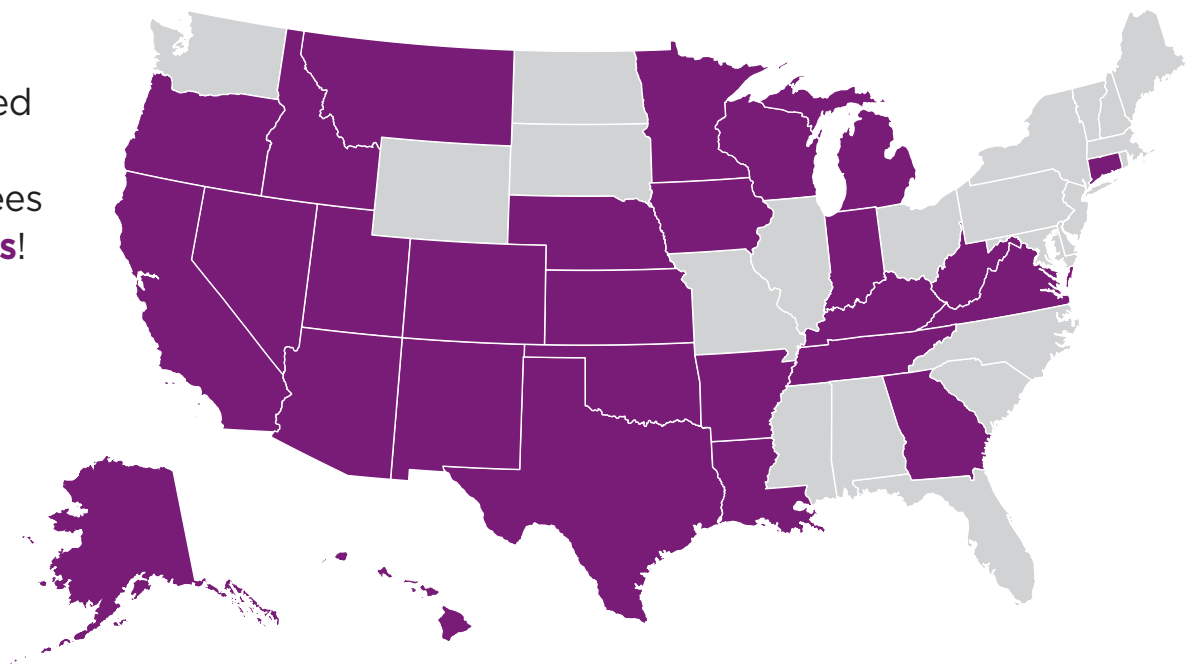
BILL & MELINDA
GATES foundation

The LESN is a joint partnership between Education Commission of the States and the National Conference of State Legislatures. The LESN annually recognizes a legislative education staff member who provided exemplary service to the legislative process. The 2017 award was presented to Todd Butterworth, Senior Research Analyst, Research Division, Legislative Counsel Bureau, Nevada Legislature.



Welcome Legislative Staff!

We are pleased
to welcome
LESN attendees
from **28 states!**



Schedule at a GLANCE

WEDNESDAY

7 a.m. - 6 p.m.
Registration

2 - 3:45 p.m.

SCHOOL CHOICE PLENARY BLOCK

Welcome and Introduction with
Jeremy Anderson

School Choice: Examining the options,
issues and outcomes

Frank Newman Award for State
Innovation Recognition

3:45 - 4 p.m. Break

4 - 5 p.m.

CONCURRENT BLOCK

- Expanding School Choice Through Open-Enrollment Policies
- Service-Learning: A path to civic and career readiness
- So You Want to Start a Voucher Program?: Lessons learned from two states
- Strategies for Extending School Choice Options to All Students
- Strong Start to Finish: Developmental education reform to support student success

5 - 6:30 p.m.
Opening Reception

THURSDAY

7 a.m. - 6 p.m.
Registration

7:30 - 8:30 a.m.
Networking Breakfast

7:30 - 8:30 a.m.
Commissioner Business Session
and Breakfast

8:30 - 10:45 a.m.

ESSA, EQUITY AND ACHIEVEMENT GAP PLENARY BLOCK

Ed Talk with Claudio Sanchez

ESSA: Continuing to collaborate and learn from each other

Ed Talk with Sue Desmond-Hellman

Achievement Gap: Keeping equity front and center

10:45 - 11 a.m. Break

11 a.m. - 12 p.m.

CONCURRENT BLOCK

- Accountability Under ESSA: State indicators for school quality or student success
- Closing Attainment and Equity Gaps Using Data: A Minnesota case study
- Equity in the Early Years: Reducing achievement gaps to ensure college readiness
- Innovative Assessments with ESSA: Measuring social-emotional learning
- Title I + Arts: A pathway to education equity

12 - 12:45 p.m.
Networking Lunch

12:45 - 2:30 p.m.

TEACHING, LEADING AND CAREER READINESS PLENARY BLOCK

Ed Talk with Jahana Hayes

James Bryant Conant Award Recognition

Career Readiness: Preparing students for tomorrow's jobs

2:30 - 3 p.m. Break

3 - 4 p.m.

CONCURRENT BLOCK

- Better Aligning High School and Careers: State approaches
- Grow Your Own: A way forward in a time of teacher shortages?
- Supporting Teacher Learning
- The Oft-Overlooked K-3 Years
- Using Competency-Based Learning to Support Workforce Development and Educational Attainment

4 - 4:15 p.m. Break

4:15 - 5:15 p.m.

ROUNDTABLE DISCUSSIONS

- A Valuable Resource for Parents: Parent ToolKit, produced by NBC News Education Nation
- Advancing Educator Effectiveness from Pipeline to Practice
- Assessment Literacy: The foundation for effective educational decision making in your state?
- Charting Pathways Toward Becoming Math and Reading Ready for College and Careers

■ Common Sense - Not Common Practice: Connecting learning supports and school improvement

■ Dual Enrollment Policies: Meeting the emerging challenges

■ Equitable Access to Opportunity: States leading the way on the equity agenda

■ Reverse Transfer Policies for Associate Degrees

■ So You Want Your Schools to Do Better: Creating policy that will lead to real improvement

■ State Policies, Benefits and Challenges in Moving to a Student-Centered Approach

■ Using Pilot Program Legislation to Thoughtfully Scale Innovation

5:30 - 6:30 p.m.
Networking Reception

FRIDAY

7 a.m. - 12 p.m.
Registration

7:30 - 8:30 a.m.
Networking Breakfast

7:30 - 8:30 a.m.
Commissioner Orientation and Breakfast

8:30 - 10 a.m.

FUNDING PLENARY BLOCK

Corporate Award Recognition

Ed Talk with Mike Griffith

Funding: Uncovering new opportunities

10 - 10:15 a.m. Break

10:15 - 11:15 a.m.

CONCURRENT BLOCK

- Broadening Access and Participation to Ensure a Diverse and Prepared STEM Workforce
- Financial Aid Redesign: Serving adult students with state aid policies
- Getting Learners Online to Give Them a Leg Up: Expanding access to broadband in local communities
- Pre-K Funding and Quality
- Times They Are a Changing: Funding public education in uncertain times

11:15 - 11:30 a.m. Break

11:30 a.m. - 12 p.m.
Closing Networking Lunch

Pre-FORUM

TUESDAY

7:30 a.m. – 6 p.m.

REGISTRATION

GARDEN PATIO

7 a.m. – 5 p.m.

LEGISLATIVE EDUCATION STAFF NETWORK MEETING

ROOM: GARDEN ROOM

12 – 6 p.m.

NATIONAL CENTER FOR LEARNING AND CIVIC ENGAGEMENT BOARD MEETING

ROOM: STUART

12 – 5:30 p.m.

EXECUTIVE DIRECTOR POLICY FORUM

ROOM: WINDSOR COMPLEX

12 – 5:30 p.m.

STRONG START TO FINISH ADVISORY MEETING

ROOM: CRYSTAL

WEDNESDAY

7:30 a.m. – 6 p.m.

REGISTRATION

GARDEN PATIO

8 a.m. – 12 p.m.

LEGISLATIVE EDUCATION STAFF NETWORK MEETING

ROOM: GARDEN ROOM

8 a.m. – 12 p.m.

EXECUTIVE DIRECTORS POLICY FORUM

ROOM: WINDSOR COMPLEX

8 a.m. – 12 p.m.

STRONG START TO FINISH ADVISORY MEETING

ROOM: CRYSTAL

8 – 10 a.m.

NATIONAL CENTER FOR LEARNING AND CIVIC ENGAGEMENT BOARD MEETING

ROOM: STUART

WEDNESDAY

QUICK LOOK

WEDNESDAY

2 - 3:45 p.m.

PLENARY BLOCK

SCHOOL CHOICE

ROOM: BALLROOM

Welcome and Introduction with Jeremy Anderson,
President, Education Commission of the States

School Choice: Examining the options, issues
and outcomes

Frank Newman Award for State Innovation Recognition

4 - 5 p.m.

CONCURRENT BLOCK

LOCATION: VICTORIAN BUILDING

1

So You Want to Start a Voucher Program:
Lessons learned from two states

ROOM: CRYSTAL

2

Strategies for Extending School Choice Options
to All

ROOM: WINDSOR

LOCATION: CALIFORNIA CABANAS

3

Expanding School Choice Through Open-
Enrollment Policies

ROOM: PALM

4

Service-Learning: A path to civic and
career readiness

ROOM: SUNSET

5

Strong Start to Finish: Developmental education
reform to support student success

ROOM: SEABREEZE

WEDNESDAY

7 a.m. – 6 p.m.

REGISTRATION

GARDEN PATIO

2 – 3:45 p.m.

School Choice Plenary Block

ROOM: BALLROOM

Welcome and Introduction with Jeremy Anderson, President, Education Commission of the States

School Choice: Examining the options, issues and outcomes

The multi-faceted topic of school choice is one of the most debated and diversely-approached discussions in education circles. With a new federal focus on school choice, there is subsequent movement at the state-level to revamp policies, but what equity, accountability and funding aspects should be carefully considered?

MODERATOR: Andrew Ujifusa, Reporter, Education Week

PANEL: Mike Petrilli, President, Fordham Institute; Karega Rausch, Vice President of Research and Evaluation, National Association of Charter School Authorizers; Hanna Skandera, Secretary of Education, New Mexico Public Education Department

Frank Newman Award for State Innovation Recognition

3:45 – 4 p.m. Break

4 – 5 p.m.

Concurrent Block

So You Want to Start a Voucher Program?: Lessons learned from two states

ROOM: CRYSTAL

Many state policymakers increasingly show interest in creating or refining voucher programs — sometimes called scholarship programs — to expand their state's school choice options. Leaders in two states will share their experiences and lessons learned in creating and implementing voucher programs over the past few years.

PRESENTERS: Tony Evers, State Superintendent, Wisconsin Department of Public Instruction; Gerard Robinson, Resident Fellow, American Enterprise Institute; Carey M. Wright, State Superintendent of Education, Mississippi Department of Education

Strategies for Extending School Choice Options to All Students

ROOM: WINDSOR

High-quality school choice options in some urban areas produce increases in achievement for students who need it most, but what about students in rural areas? Or students whose parents have difficulty navigating an often-complicated school choice process? Join us for a facilitated, interactive conversation and learn from policymakers about what works, what does not and how to design school choice policies that serve all students.

PRESENTERS: Dennis Roch, New Mexico State Representative, New Mexico Legislature; Anne Wicks, Director, Education Reform, George W. Bush Institute

Expanding School Choice Through Open-Enrollment Policies

ROOM: PALM

While many states have open-enrollment policies, this school choice option tends to be somewhat overlooked in school choice discussions. What are the challenges and benefits to this school choice option? What needs are these policies designed to meet? How does state context shape states' approaches to open enrollment? In this session, hear from two states with open-enrollment policies, including one state with a newly-expanded program.

PRESENTERS: Erika McConduit, President and CEO, Urban League of Louisiana; Dawn Wallace, Senior Advisor for Education, Arizona Office of the Governor

Service-Learning: A path to civic and career readiness

ROOM: SUNSET

Many states recognize that service-learning can contribute to students' civic and career readiness. This session highlights the theoretical and research basis for using service-learning for these purposes; identification of existing state policies/standards that support this dual use of service-learning; and

WEDNESDAY

the perspective of the 2016 National Teacher of the Year who uses service-learning in her social studies classroom and as a substantial part of her Teacher of the Year platform.

PRESENTERS: *Paul J. Baumann, Director, National Center for Learning and Civic Engagement, Education Commission of the States; Jahana Hayes, 2016 National Teacher of the Year; Gary Lee Stevens, Senator, Alaska State Senate*

Strong Start to Finish: Developmental education reform to support student success

ROOM: SEABREEZE

Developmental education reform persists on state and institutional policy agendas. A flurry of reforms, encompassing innovations such as Mathways, guided pathways and co-requisite remediation transformed the field. This session presents evidence of successful efforts to support student success, examples of state policy that support expansion of reform adoption, and discussion of tools and resources from the field that can enhance state policy design and implementation.

PRESENTERS: *Tristan Denley, Vice Chancellor for Academic Affairs, University System of Georgia; Madeline Pumariega, Chancellor, Division of Florida Colleges; Uri Treisman, Executive Director, The Charles A. Dana Center*

5 - 6:30 p.m.

OPENING RECEPTION ON THE WINDSOR LAWN

THURSDAY

QUICK LOOK

THURSDAY MORNING

8:30 - 10:45 a.m.

PLENARY BLOCK

ESSA, EQUITY AND ACHIEVEMENT GAP

ROOM: BALLROOM

Ed Talk with Claudio Sanchez

ESSA: Continuing to collaborate and learn from each other

Ed Talk with Dr. Sue Desmond-Hellman

Achievement Gap: Keeping equity front and center

11 a.m. - 12 p.m.

CONCURRENT BLOCK

LOCATION: VICTORIAN BUILDING

1

Innovative Assessments with ESSA: Measuring social-emotional learning

ROOM: CRYSTAL

2

Equity in the Early Years: Reducing achievement gaps to ensure college readiness

ROOM: WINDSOR

LOCATION: CALIFORNIA CABANAS

3

Closing Attainment and Equity Gaps Using Data: A Minnesota case study

ROOM: PALM

4

Title I + Arts: A pathway to education equity

ROOM: SUNSET

5

Accountability Under ESSA: State indicators for school quality or student success

ROOM: SEABREEZE

THURSDAY

7 a.m. - 6 p.m.

REGISTRATION

GARDEN PATIO

7:30 - 8:30 a.m.

NETWORKING BREAKFAST

ROOM: CROWN

7:30 - 8:30 a.m.

COMMISSIONER BUSINESS SESSION AND BREAKFAST

ROOM: CORONET

8:30 - 10:45 a.m.

ESSA, Equity and Achievement Gap Plenary Block

ROOM: BALLROOM

Ed Talk with Claudio Sanchez, Education Correspondent, National Public Radio

ESSA: Continuing to collaborate and learn from each other

Federal regulations, state plans, capacity and implementation — where are states and what comes next? And, most importantly, what can we learn from the progress to date?

MODERATOR: Claudio Sanchez, Education Correspondent, National Public Radio

PANEL: Kirsten Baesler, State Superintendent, North Dakota Department of Public Instruction; Tony Evers, State Superintendent, Wisconsin Department of Public Instruction; Carissa Moffat Miller, Deputy Executive Director, Council of Chief State School Officers

Ed Talk with Sue Desmond-Hellman, Chief Executive Officer, Bill & Melinda Gates Foundation

Achievement Gap: Keeping equity front and center

It's a conversation that continually resurfaces because it's a challenge that evades a simple solution. Ensuring equal opportunity for all students and addressing the prevalent achievement gap takes a deep understanding of the distinct equity barriers, as well as a constant commitment to addressing them.

PANEL: Teresa Lubbers, Commissioner, Indiana Commission for Higher Education; Stephanie Wood-Garnett, Vice President, Policy to Practice, Alliance for Excellent Education; Margie Vandeven, Commissioner of Education, Missouri Department of Elementary and Secondary Education

10:45 - 11 a.m. Break

11 a.m. - 12 p.m.

Concurrent Block

Innovative Assessments with ESSA: Measuring social-emotional learning

ROOM: CRYSTAL

ESSA provides states the opportunity to experiment with new assessments, including those measuring social-emotional learning. What innovative assessment options exist in this area, and what are their technical limitations? This session discusses some of the practical, political and policy considerations for state leaders as they consider using such innovative assessments.

PRESENTERS: Benjamin I. Hayes, Chief Accountability Officer, Washoe County School District; Bob LaRocca, Director of Policy and Communications, Transforming Education; Sharmila Basu Mann, Director, K-12 Institute, Education Commission of the States

Equity in the Early Years: Reducing achievement gaps to ensure college readiness

ROOM: WINDSOR

To produce college-ready students, achievement gaps that begin before children enter kindergarten must be addressed. Children who do not engage academically or socially at a young age are more likely to struggle in social and economic life as adults. Join this session to learn about the benefits of high-quality early learning programs and how they prepare children for needed academic skills, as well as help close the achievement gap.

PRESENTERS: Joe Garcia, President, Western Interstate Commission for Higher Education; Jason Sachs, Executive Director of Early Childhood, Boston Public Schools; Aaliyah Samuel, Director, Education Division, National Governors Association

THURSDAY

Closing Attainment and Equity Gaps Using Data: A Minnesota case study

ROOM: PALM

Over the past 10 years, states have approached attainment rates and goals in many ways. Minnesota is an example of a state that created a strong goal aiming to increase their attainment rate and close equity gaps. This session explores how Minnesota used data collected through their state longitudinal data system to evaluate the student landscape and target student populations with high achievement/equity gaps.

PRESENTERS: *Lexi Anderson, Policy Analyst, Education Commission of the States; Terri E. Bonoff, Former Minnesota State Senator, Higher Education Workforce Development Committee Chair; Meredith Fergus, Manager Financial Aid Research/SLEDS, Minnesota Office of Higher Education*

Title I + Arts: A pathway to education equity

ROOM: SUNSET

Imagine an America where all students served in Title I-eligible schools have access to arts in education — that's 21 million students on a pathway to success in school, career and life. This session addresses how the California Alliance for Arts Education achieves equity and excellence in education through arts education initiatives. It also explores how to create a lasting mechanism that removes barriers for connecting effective arts education strategies to renewable sources of funding.

PRESENTERS: *Joe Landon, Executive Director, California Alliance for Arts Education; Caroline King, Program Director, Title I Arts Integration Initiative, San Diego Unified School District; Laura Smyth, Program Director, Title I Initiative, California Alliance for Arts Education*

Accountability Under ESSA: State indicators for school quality or student success

ROOM: SEABREEZE

ESSA requires state accountability systems to include a measure of school quality or student success. What options exist for states that wish to go beyond easy-to-measure indicators, such as student absenteeism? What technical and political challenges do state leaders face as they seek to incorporate robust school-quality or student-success indicators? In this session, a panel addresses these questions and more.

PRESENTERS: *Michael Kirst, President, California State Board of Education; Claire Voorhees, Director, K-12 Reform, Foundation for Excellence in Education; Dianna R. Wentzell, Commissioner, Connecticut State Department of Education*

QUICK LOOK

THURSDAY AFTERNOON

12:45 - 2:30 p.m.

PLENARY BLOCK

TEACHING & LEADING AND CAREER READINESS

ROOM: BALLROOM

San Diego Youth Symphony Performance

Ed Talk with Jahana Hayes

James Bryant Conant Award Recognition

Career Readiness: Preparing students for tomorrow's jobs

Gavel Exchange

3 - 4 p.m.

CONCURRENT BLOCK

LOCATION: VICTORIAN BUILDING

1

Better Aligning High School and Careers:
State approaches

ROOM: CRYSTAL

2

Using Competency-Based Learning to
Support Workforce Development and
Educational Attainment

ROOM: WINDSOR

LOCATION: CALIFORNIA CABANAS

3

Grow Your Own: A way forward in a time of
teacher shortages?

ROOM: PALM

4

The Oft-Overlooked K-3 Years

ROOM: SUNSET

5

Supporting Teacher Learning

ROOM: SEABREEZE

12 - 12:45 p.m.

NETWORKING LUNCH

ROOM: CROWN

12:45 - 2:30 p.m.

Teaching, Leading and Career Readiness Plenary Block

ROOM: BALLROOM

San Diego Youth Symphony Performance

Ed Talk with Jahana Hayes, 2016 National Teacher of the Year

James Bryant Conant Award Recognition featuring Lowell Milken, Chairman and Co-Founder, Milken Family Foundation

Career Readiness: Preparing students for tomorrow's jobs

If there is one overarching objective for our education system, it's ensuring our nation's students are prepared for success in the workforce. This career readiness goal is shared across the K-12 and postsecondary spectrum and, to achieve success, it requires an understanding of the jobs of our future.

PANEL: Gov. Steve Bullock, Montana; Gov. Phil Bryant, Mississippi; Gov. Kate Brown, Oregon

Gavel Exchange

Education Commission of the States is privileged to have a governor serve as Chair and provide leadership for our organization. We are thankful for the deep involvement and direction that Montana Gov. Steve Bullock provided as the 2015-17 Chair. Today we are honored to welcome Mississippi Gov. Phil Bryant as he officially transitions into his role as the 2017-19 Chair.

Jeremy Anderson, President, Education Commission of the States

Gov. Steve Bullock, Governor, State of Montana, 2015-17 Education Commission of the States Chair

Gov. Phil Bryant, Governor, State of Mississippi, 2017-19 Education Commission of the States Chair

2:30 - 3 p.m. Break

3 - 4 p.m.

Concurrent Block

Better Aligning High School and Careers: State approaches

ROOM: CRYSTAL

How can states help students explore potential careers in high school and provide them with early opportunities to complete coursework and credentials leading to jobs in their fields of interest? In this session, states share their experiences in work-based learning, youth apprenticeships and career/technical education dual enrollment, including key policy components, as well as best practices and lessons learned in implementing these policies.

PRESENTERS: *Blake Flanders, President & CEO, Kansas Board of Regents; Danielle Mezera, Principal Consultant, DCM Consulting; Emily Passias, Director, Office of Career-Technical Education, Ohio Department of Education*

Using Competency-Based Learning to Support Workforce Development and Educational Attainment

ROOM: WINDSOR

Competency-Based Learning (CBE) is a fast-growing area of postsecondary policy and practice. How can state policy support this development to enhance educational attainment and workforce development in states? What state financial aid and other policy implications exist when CBE is expanded? Join this session to hear from states that successfully utilize CBE to support education access and workforce preparation.

PRESENTERS: *Allison C. Bell, Director, HCM Strategists; Anne Bowles, Director, Special Projects & Initiatives, Achieve; Aaron Brower, Provost & Vice Chancellor, University of Wisconsin-Extension*

Grow Your Own: A way forward in a time of teacher shortages?

ROOM: PALM

States continue to face teacher shortages by geography (urban, rural), demographics (high poverty, high minority) and subject area (science, math, special education). Grow Your Own teacher programs are used by states and districts throughout the country to recruit high school students into the profession, provide them with high-quality training and prepare them for lifelong teaching careers in their community. This session explores how these programs fare in filling teacher shortages.

PRESENTERS: Casey M. Bethel, 2017 Georgia Teacher of the Year; Dan Brown, Co-Director, Educators Rising; Karen M. Trujillo, State Director, Educators Rising New Mexico; Sofia Villa, Member, Educators Rising

The Oft-Overlooked K-3 Years

ROOM: SUNSET

In recent years, a large number of states prioritized improving pre-K quality and ensuring students possess appropriate reading skills in their early learning efforts. But what happens to those students that leave a high-quality pre-K program only to walk into a mediocre K-3 experience? This session highlights the key components of a high-quality K-3 continuum.

PRESENTERS: Kelly Pollitt, Chief Strategist, Policy and Alliances, National Association of Elementary School Principals; Shannon Riley-Ayers, Associate Research Professor, The National Institute for Early Education Research at Rutgers University; Laurie Smith, Education/Workforce Development Policy Advisor, Office of the Governor, Mississippi

Supporting Teacher Learning

ROOM: SEABREEZE

Many beginning teachers lack the necessary preparation for teaching and research shows that underprepared teachers are more likely to teach the most at-risk students than more experienced teachers. This session discusses state approaches to support teacher learning and ways to keep teachers in the classroom through teacher leader and career ladder programs.

PRESENTERS: Deborah Loewenberg Ball, Professor, University of Michigan and Director, TeachingWorks; Scott Ridley, Dean, Texas Tech University College of Education; Melody Schopp, Secretary of Education, South Dakota Department of Education; Shirley N. Weber, Assemblymember, California State Assembly

4 - 4:15 p.m. Break

4:15 - 5:15 p.m.

Roundtable Discussions

ROOM: CROWN

Roundtable Discussions with VIP Partners



Dual Enrollment Policies: Meeting the emerging challenges

Over the last few years, participation in dual and concurrent enrollment programs — which allow high school students to earn college credit — dramatically increased. Despite their popularity, several challenges exist that may prevent certain academically-eligible students from benefiting. This roundtable discusses three main challenges facing dual and concurrent enrollment programs — unpredictable or inadequate funding, insufficient pool of qualified high school teachers and lack of agreement regarding the transferability of such courses — and offers policy recommendations that states adopted to overcome these challenges.

PRESENTERS: Dr. Gregory S. Kienzl, Principal Strategist, Policy Research, ACT Inc.; Amy Williams, Program Manager, Dual Enrollment & Big Sky Pathways, Montana University System, Office of the Commissioner of Higher Education



So You Want Your Schools to Do Better: Creating policy that will lead to real improvement

We are better than we were but we need to be better still. Schools of tomorrow should not recreate schools of the past. How can public policy help or hinder the improvement of learning opportunities for every learner? The development of public policy must start with a clear vision of what we want our schools to be in the future. We must also clearly define what core problem(s) we are trying to solve based on valid and reliable evidence. This roundtable leads policymakers and leaders through a discussion on how to create effective public policy to improve schools.

PRESENTER: Dr. Mark. A. Elgart, President and CEO, AdvancED



Advancing Educator Effectiveness from Pipeline to Practice

For two decades, the National Institute for Excellence in Teaching (NIET) has worked with teachers and school leaders to implement an educator support structure that

grows every teacher, every year. Through a balance of in-person and web-based technologies, NIET provides organizations with a clear structure for developing their human capital. Join this roundtable to learn how NIET supports district and higher education partners through the core strategies of The System for Teacher and Student Advancement, a comprehensive educator effectiveness model providing powerful opportunities for career advancement, ongoing professional development, instructionally-focused evaluation and performance-based compensation for educators impacting more than 200,000 teachers and 2.5 million students.

PRESENTERS: *Dr. Patrice Pujol, President, National Institute for Excellence in Teaching; Dr. Josh Barnett, Chief Learning Officer, National Institute for Excellence in Teaching*



A Valuable Resource for Parents: Parent ToolKit, produced by NBC News Education Nation

The Parent Toolkit is an online resource designed to help parents navigate their child's educational journey from pre-K through high school. The Parent Toolkit supports the whole child, providing parents with practical tips and tricks to better understand academic benchmarks, while supporting social and emotional learning, health and wellness. NBC News Education Nation produced the Parent Toolkit in both English and Spanish and Pearson sponsored this free public resource. Join this roundtable to learn why parent groups and school staff find this resource valuable in supporting families in both English and Spanish, across the nation.

PRESENTER: *Jamie Farnsworth, Manager, Digital and Operations, NBC News*



Common Sense - Not Common Practice: Connecting learning supports and school improvement

ESSA shifted power from the federal government to states and districts — solidifying student achievement as a state and local responsibility. Many students encounter barriers that prevent them from the benefits of quality instruction. In most districts, non-instructional services remain as a multitude of disconnected activities, thereby prohibiting efficient and cost-effective supports. Because students face complex problems, only an integrated system of supports can address barriers to learning while reducing redundancy and achieving cost savings. Learn how Learning Supports provides a comprehensive framework for state, district and

school leaders to organize and deliver supportive services in a more fiscally responsible way.

PRESENTERS: *Ron Mirr, Senior Vice President, Family and Community Engagement, Scholastic; Rhonda Waltman Neal, Senior Director, Learning Supports, Scholastic; Jessie Lyons, Vice President, Government Relations and Strategic Partnerships, Scholastic; Morgan Ford, Systems Manager, Learning Supports and Family and Community Engagement Services, Scholastic*

Roundtable Discussions



Using Pilot Program Legislation to Thoughtfully Scale Innovation

With pockets of innovative education and excellence in districts across the country, there are a growing number of states that recognize the importance of thoughtfully scaling education innovation through pilot programs. This interactive roundtable discussion explores how pilot legislation can advance innovative models of education and includes a brief overview of pilot legislation that states have proposed or passed into law, as well as time for participants to discuss what types of innovative learning practices they would like to scale in their state. This roundtable helps states begin to consider which types of pilot programs may work best in their policy and education environments.

PRESENTER: *Matt Williams, Vice President of Policy and Advocacy, KnowledgeWorks*



Charting Pathways Toward Becoming Math and Reading Ready for College and Careers

Join this roundtable to discuss the grade-by-grade expectations for students to grow toward becoming college and career ready in the areas of reading and mathematics and postsecondary goals toward which individual students should aspire. With new opportunities for accountability systems aligned with ESSA and an ongoing focus on informing instruction and monitoring student growth, Lexile and Quantile measures and the research behind them represent a tremendous potential for students, parents, educators and policymakers alike.

PRESENTERS: *Dr. Malbert Smith, President and CEO, MetaMetrics; Dr. Patricia Wright, Former Superintendent of Public Instruction, Virginia Department of Education*

NATIONAL STUDENT CLEARINGHOUSE **Reverse Transfer Policies for Associate Degrees**

Many states across the country are implementing the reverse transfer of credits for associate degrees. Should your state have policies and procedures for reverse transfer? Thirteen states have legislation for reverse transfer and the National Student Clearinghouse launched a nationwide effort. This roundtable discusses the policies that need to be reviewed, best practices and the challenges in implementing policies both at the state and institutional level.

PRESENTER: *Michelle Blackwell, National Manager, Reverse Transfer, National Student Clearinghouse*



Assessment Literacy: The foundation for effective educational decision making in your state?

The passage of ESSA brings flexibility of multiple measures and indicators to support data-informed educational decisions to create a well-rounded education for all students. Despite the increased access to multiple sources of assessment data, national survey results suggest that assessment literacy among educators and education stakeholders is lacking. Until more education stakeholders are assessment literate, the opportunity to use assessment evidence to grow student achievement will continue to lag behind. Join this roundtable discussion and hear why assessment literacy matters, what assessment-literate stakeholders can do and the extent to which an increased investment in assessment literacy is the foundation to maximize individual student learning, enhance teacher effectiveness, continuously improve schools and close achievement gaps.

PRESENTER: *Jason Mendenhall, Senior Vice President, Strategic Solutions, NWEA*

RENAISSANCE™ **State Policies, Benefits and Challenges in Moving to a Student-Centered Approach**

Personalized learning is one of the most powerful strategies talked about in K-12 education today. With advancements in technology, the ability to tailor instruction to meet the needs and interests of the individual student is not only a possibility, but a reality. With 24 states in the advanced or development stages of competency-based education, what policies are in place to support personalized learning? Join the conversation to discuss state policies, benefits and

challenges in moving from a historic factory model to a student-centered approach to meet society's demands.

PRESENTERS: *Dr. Michael Ward, Consultant and Professor of Practice, MEWs Educational Consulting; Dr. Alan Morgan, President, High Desert Government Relations; Paula K. O'Gorman, Senior Vice President, Strategic Partnerships, Renaissance Learning*



Equitable Access to Opportunity: States leading the way on the equity agenda

Decades of research show that students of color and low-income students are disproportionately taught by ineffective, out-of-field and inexperienced teachers. At the leadership of the civil rights community, the Obama administration required states to develop Equity Plans to ensure that every student has access to effective teaching. ESSA contains similar language to the Equity Plan requirements and states are leading the way on developing systems to understand the equity gaps and devise solutions to eliminate them. Join SAS Institute in this roundtable discussion of how better equity-related data and analytics can help states serve disadvantaged students and ensure equitable opportunity for all.

PRESENTER: *Katrina Miller, Education Consultant, SAS*

5:30 - 6:30 p.m.

NETWORKING RECEPTION

ON THE WINDSOR LAWN



AGENDA Friday

QUICK LOOK

FRIDAY

8:30 - 10 a.m.

PLENARY BLOCK

FUNDING

ROOM: BALLROOM

Corporate Award Recognition

Ed Talk with Mike Griffith

Funding: Uncovering new opportunities

10:15 - 11:15 a.m.

CONCURRENT BLOCK

LOCATION: VICTORIAN BUILDING

1

Times They Are a Changing: Funding public education in uncertain times

ROOM: CRYSTAL

2

Broadening Access and Participation to Ensure a Diverse and Prepared STEM Workforce

ROOM: WINDSOR

LOCATION: CALIFORNIA CABANAS

3

Pre-K Funding and Quality

ROOM: PALM

4

Getting Learners Online to Give Them a Leg Up: Expanding access to broadband in local communities

ROOM: SUNSET

5

Financial Aid Redesign: Serving adult students with state aid policies

ROOM: SEABREEZE

7 a.m. - 12 p.m.

REGISTRATION

GARDEN PATIO

7:30 - 8:30 a.m.

NETWORKING BREAKFAST

ROOM: CROWN

7:30 - 8:30 a.m.

COMMISSIONER ORIENTATION AND BREAKFAST

ROOM: CORONET

8:30 - 10 a.m.

Funding Plenary Block

ROOM: BALLROOM

Corporate Award Recognition

Ed Talk with Mike Griffith, School Finance Strategist, Education Commission of the States

Funding: Uncovering new opportunities

When there is more work to do and less money to pay for it, creative approaches are required. When was the last time you looked across the states to investigate different funding methods at the state and local levels? Don't recreate the wheel when you can benefit from solutions others are using.

MODERATOR: *Mike Griffith, School Finance Strategist, Education Commission of the States*

PANEL: *Mike Baumgartner, Executive Director, Nebraska Coordinating Commission for Postsecondary Education; Michael Kirst, President, California State Board of Education; Natalie Shirley, Oklahoma Secretary of Education and Workforce Development, Office of Gov. Mary Fallin*

10 - 10:15 a.m. Break

10:15 - 11:15 a.m.

Concurrent Block

AGENDA Friday

Times They Are a Changing: Funding public education in uncertain times

ROOM: CRYSTAL

Many states continue to grapple with school funding and, unfortunately, students end up paying the price. Join this open discussion and hear more about the solutions that some states and districts found to the many school funding issues policymakers face.

PRESENTER: *Mike Griffith, School Finance Strategist, Education Commission of the States*

Broadening Access and Participation to Ensure a Diverse and Prepared STEM Workforce

ROOM: WINDSOR

Federal labor data suggests that jobs in science, technology, engineering and math (STEM) fields — and computer occupations in particular — will see massive growth in the coming years. Yet, data shows that programs leading to employment in these occupations significantly lack representation from female, African American, Hispanic and Native American populations. This session explores how states enhance STEM and computer science experiences for a broader array of students and help prepare a more diverse STEM workforce.

PRESENTERS: *Angela K. Hemingway, Executive Director, Idaho STEM Action Center; Daryl Monear, Associate Director for Academic Affairs and Policy, Washington Student Achievement Council*

Pre-K Funding and Quality

ROOM: PALM

Over the past five years, states increased funding to pre-K programs by 47 percent. Yet, determining how to spend limited funds — towards expanding access or improving quality — can prove difficult. This session reviews the various funding mechanisms states use to cover pre-K expenses and explores the interplay between increasing access and program quality.

PRESENTERS: *Bruce Atchison, Director, Early Learning Institute, Education Commission of the States; Allison Muhlendorf, Executive Director, Alabama School Readiness Alliance; John Robert Pruette, Executive Director, North Carolina Department of Public Instruction/Office of Early Learning; GG Weisenfeld, Research Professor, National Institute for Early Education Research/Center on Enhancing Early Learning Outcomes*

Getting Learners Online to Give Them a Leg Up: Expanding access to broadband in local communities

ROOM: SUNSET

Access to and use of high-quality broadband (HQB) internet is a cornerstone of education for today's K-12 students and postsecondary learners. To ensure HQB is available to learners, an increasing number of local governments manage and/or provide broadband service to residents and often do so with authority provided by state legislatures. Participate in this session and leave with an understanding of the role state policy can play in supporting or hindering broadband access.

PRESENTERS: *Aaron Brower, Provost and Vice Chancellor, University of Wisconsin-Extension; Don Means, Director, Gigabit Libraries Network; Christopher Mitchell, Director, Community Broadband Networks, Institute for Local Self-Reliance*

Financial Aid Redesign: Serving adult students with state aid policies

ROOM: SEABREEZE

In several states, adult students need to make up as much as 77 percent of new degree holders to meet 60 percent attainment by 2025. Reaching adults requires a new set of strategies, especially when it comes to financial aid programs. Join us to hear about how states reach adult students with the financial support they need to make it to the finish line.

PRESENTERS: *Amy Ellen Duke-Benfield, Senior Policy Analyst, Center for Law and Social Policy; Jessica Gibson, Assistant Executive Director for Adult Learner Initiatives, Tennessee Higher Education Commission; Teresa Lubbers, Commissioner, Indiana Commission for Higher Education*

11:30 a.m. - 12 p.m.

CLOSING NETWORKING LUNCH

ON THE WINDSOR LAWN



James Bryant Conant **AWARD**

Lowell Milken

Chairman and Co-Founder,
Milken Family Foundation

Education Commission of the States is proud to announce Lowell Milken as the 2017 recipient of the James Bryant Conant Award, one of the most prestigious honors in the education community.

For more than 30 years, Lowell Milken has been leading the Milken Family Foundation as it continues to fulfill its mission to support individuals and innovation in not only education, but also in medical research and public health. Milken's education research, in-person classroom visits with teachers and students, and development of prominent and robust initiatives highlight both his professional and personal interest in and commitment to advancing education.

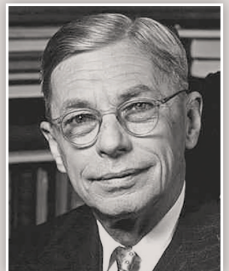
In his ongoing support of education practice and programs, Milken has created initiatives that provide educators and students with opportunities allowing for increased success both in the present and future. The Milken Educator Awards, celebrating its 30th anniversary, have recognized exemplary early- to mid-career educators through financial prizes and a professional network dedicated to strengthening education. The National Institute for Excellence in Teaching advances educator effectiveness and student achievement, impacting more than 200,000 educators and 2.5 million students daily. The Lowell Milken Center for Unsung Heroes engages students in project-based learning to discover individuals in history who have made a profound difference in the lives of others.

Education Commission of the States is honored to award Lowell Milken with the 2017 James Bryant Conant Award, as his inclusive approach to providing opportunities for educators, students and communities to increase innovation in and awareness of the importance of a well-rounded and comprehensive education experience demonstrates his commitment to supporting education from beginning to end.



ABOUT THE AWARD

The James Bryant Conant Award, named for the co-founder of Education Commission of the States and former president of Harvard University, recognizes outstanding individual contributions to American education. The award was established in 1977 to memorialize Conant, a pivotal figure in the education reforms of the 1950s and '60s that continue to shape schools today. Once called the "Inspector General" of U.S. education, Conant advocated for comprehensive secondary education for all, improvements to inner-city schools and reforms to teacher education. Each year, Education Commission of the States bestows the award on an individual whose efforts and service have created a pronounced and lasting influence on American education. Lowell Milken joins an esteemed list of past recipients, including Thurgood Marshall, E.D. Hirsch, Fred (Mr.) Rogers and Lamar Alexander.



FRANK NEWMAN AWARD for State Innovation

Hawaii

Education Commission of the States is proud to announce the state of Hawaii as the 2017 recipient of the Frank Newman Award for State Innovation for their broadly supported and impactful education improvement efforts, including focusing school accountability on students' college and career readiness, supporting teachers and education leaders across the state, developing a comprehensive longitudinal data system and investing in data literacy.

Hawaii's suite of data tools includes a longitudinal data system that provides educators with real-time access to data and even allows for targeting underperforming student populations. The state's accompanying long-term investment in data literacy is evidenced by their Formative Assessment/Data Team initiative, which engages 11,000 teachers statewide to participate in grade-level or content-based data teams using formative assessment data to inform and improve instruction.

In 2013, the U.S. Department of Education approved the first iteration of Hawaii's new accountability system, Strive HI, which shifted the system's focus from 10th-grade proficiency to ensuring all students graduate ready to enter postsecondary institutions or the workforce. The state's accountability system extends beyond test scores to include broad measures, such as student growth, chronic absenteeism, college readiness and college-going.

Through its policy and program efforts, supported by a U.S. Department of Education Race to the Top grant, Hawaii developed a robust support system for its teachers and education leaders. The statewide Induction and Mentoring Initiative, which pairs all first- and second-year teachers with an experienced mentor beginning their first day, increased the five-year teacher retention rate from 44 percent (2004 hires) to 52 percent (2010 hires). To support school leaders, the Leadership Institute provides training programs with relevant and coherent curricula to the different leadership role groups, which better equips leaders to achieve success in their roles.



ABOUT THE AWARD

The Frank Newman Award for State Innovation recognizes states and territories for enacting innovative education reforms or implementing innovative programs that go beyond marginal or incremental changes to improve student outcomes on a large scale. In 2005, the award was renamed in honor of the late Frank Newman, who served as president of Education Commission of the States for 14 years. The award recognizes a state for any of the following:

- Education improvement efforts that are replicable and hold valuable lessons for other states.
- Bold and courageous policies, including existing approaches with evidence of significant impact on student achievement in the state.
- Policies or programs that have bipartisan, broad-based support.



Corporate AWARD

Unum

Education Commission of the States is proud to announce Unum as the 2017 recipient of the Education Commission of the States Corporate Award.

For close to 170 years, Unum has focused on supporting people and their families through its core business and guiding principles. Over the years, its corporate responsibility efforts have remained focused on ensuring students have access to educational opportunities that enrich their lives and promote their future success. Unum supports public education not only with financial contributions, but also mentorships, volunteer work, and academic and professional development opportunities.

Education Commission of the States is honored to award Unum with the 2017 Corporate Award for its dedication to advancing the academic careers of students and helping them to achieve further success upon graduation, and also for its recognition of the critical role that education plays in building and sustaining strong communities.



ABOUT THE AWARD

Education Commission of the States Corporate Award honors nonprofit organizations and for-profit corporations that have demonstrated a sustained commitment to, and investment in, improving public education, particularly efforts that reach those currently not well-served by the educational system. The award was created under the leadership of former Wyoming Gov. Jim Geringer, who served as the 1999–2000 Education Commission of the States Chair.



Past Award **WINNERS**

JAMES BRYANT CONANT AWARD

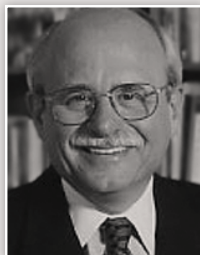
2016 <i>Sal Khan</i>	1996 <i>John W. Gardner</i>
2015 <i>William L. Sanders</i>	1995 <i>Richard W. Riley</i>
2014 <i>Marc Tucker</i>	1994 <i>Ernest L. Boyer</i>
2013 <i>Gene Wilhoit</i>	1993 <i>Wilhelmina Delco</i>
2012 <i>E.D. Hirsch</i>	1992 <i>Theodore R.Sizer</i>
2011 <i>Ted Kolderie</i>	1991 <i>James P. Comer</i>
2010 <i>Linda Darling-Hammond</i>	1989 <i>Fred M. Hechinger</i>
2009 <i>Kati Haycock</i>	1988 <i>Lamar Alexander</i>
2008 <i>Ron Wolk</i>	1987 <i>Marian Wright Edelman</i>
2007 <i>Gaston Caperton</i>	1986 <i>Harold Howe II</i>
2006 <i>Nancy S. Grasmick</i>	1985 <i>Terrel H. Bell and David P. Gardner</i>
2005 <i>Sharon Lynn Kagan</i>	1984 <i>James B. Hunt Jr.</i>
2004 <i>Thurgood Marshall and John H. Stelle</i>	1983 <i>Carl Perkins</i>
2003 <i>Roy Romer</i>	1982 <i>John Brademas</i>
2002 <i>Robert P. Moses</i>	1981 <i>Terry Sanford</i>
2001 <i>Fred Rogers</i>	1980 <i>Ralph Tyler</i>
2000 <i>John Goodlad</i>	1979 <i>Francis Keppel</i>
1999 <i>Frank Newman</i>	1978 <i>Joan Ganz Cooney</i>
1998 <i>Robert Slavin</i>	1977 <i>Benjamin Mays</i>
1997 <i>Claiborne Pell</i>	

FRANK NEWMAN AWARD FOR STATE INNOVATION

2016 <i>Mississippi</i>	2007 <i>Alaska</i>
2015 <i>Kentucky</i>	2006 <i>Kentucky</i>
2014 <i>Illinois</i>	2005 <i>Florida and Utah</i>
2013 <i>Delaware</i>	2004 <i>North Carolina and South Carolina</i>
2012 <i>New Hampshire</i>	2003 <i>Maryland</i>
2011 <i>New England Secondary School Consortium</i>	2002 <i>Alabama and Texas</i>
2010 <i>Ohio</i>	2001 <i>Georgia</i>
2009 <i>Tennessee</i>	2000 <i>Connecticut</i>
2008 <i>North Dakota</i>	1999 <i>North Carolina</i>
	1998 <i>Oregon</i>

2017 Distinguished SENIOR FELLOWS

Education Commission of the States is honored to have four education policy veterans serving as Distinguished Senior Fellows in 2017. The fellows, with expertise ranging from preschool to postsecondary and beyond, serve as advisers to the organization and to member states.



CHRISTOPHER CROSS

Chairman, Cross & Joftus, LLC

Christopher Cross is chairman of an education consulting firm and serves as a consultant to the Broad Foundation and the C.S. Mott Foundation. He served as a member of the advisory board for the School Evaluation Service

program of Standard and Poor's and as a senior fellow with the Center for Education. Previously, he served as president and CEO of the Council for Basic Education (CBE). Before joining CBE, he served as director of the Education Initiative of the Business Roundtable and as assistant secretary for Educational Research and Improvement in the U.S. Department of Education. Cross has written extensively in the education and public policy areas and has been published in numerous journalistic, scholarly and technical publications, including the College Board Review, the Washington Post and the Los Angeles Times.



AIMEE ROGSTAD GUIDERA

President and CEO, Data Quality Campaign

Aimee Rogstad Guidera is a national leader in education data quality and utilization. She served as the founding president and CEO of the Data Quality Campaign (DQC), a national, nonprofit organization leading the effort to empower educators, students, parents and policymakers with the information they need to make the best decisions to improve student outcomes. Aimee was named one of TIME's 12 Education Activists of 2012, is a Pahara-Aspen Education Fellow and an alumna of the Institute for Educational Leadership's Education Policy Fellowship Program. Previous roles include serving as the director of the Washington, D.C., office of the National Center for Educational Achievement, serving as vice president of programs for the National Alliance of Business and

2017 Distinguished SENIOR FELLOWS

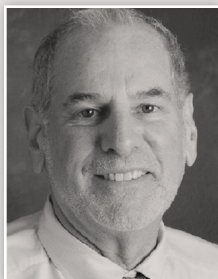
working in the education division of the National Governors Association's Center for Best Practices. Aimee received her bachelor's degree from Princeton University's Woodrow Wilson School of Public and International Affairs and earned a master's degree in public policy from Harvard's John F. Kennedy School of Government.



MICHAEL PETRILLI

President, Thomas B. Fordham Institute

Mike Petrilli is president of the Thomas B. Fordham Institute, research fellow at Stanford University's Hoover Institution, executive editor of Education Next, and a Distinguished Senior Fellow for Education Commission of the States. He is the author of "The Diverse Schools Dilemma" and editor of Education for Upward Mobility. Petrilli helped to create the U.S. Department of Education's Office of Innovation and Improvement and the Policy Innovators in Education Network.



PHILIP "URI" TREISMAN

Professor of Mathematics and Executive Director, Charles A. Dana Center, The University of Texas at Austin

Philip "Uri" Treisman is the founder and director of the University of Texas at Austin's Charles A. Dana Center. He served on the American Association of Community Colleges 21st Century Commission on the Future of Community Colleges and serves on the boards of many entrepreneurial nonprofits committed to improving American education. He was named a MacArthur Fellow in 1992 for his work on nurturing minority student high achievement in college mathematics and named Scientist of the Year by the Harvard Foundation for his outstanding contributions to mathematics. Treisman has received numerous honors and awards for his efforts, including the 1987 Charles A. Dana Award for Pioneering Achievement in American Higher Education. He received an interdisciplinary Ph.D. from the University of California at Berkeley, where he studied both mathematics and education.

POLICY EXPERTISE at Your Fingertips

Whether you have a simple question or need in-depth policy research, Education Commission of the States' policy team is ready to assist. Simply complete the brief Request Assistance form on our website and receive a response, in many cases, within 24 hours.

ecs.org/convene-counsel/request-assistance

Session **SPEAKERS**



JEREMY ANDERSON

@ECS_Anderson

President, Education
Commission of the States

Jeremy works with all state education leaders, from governors to chief state school officers — from both political parties — to provide unbiased information, personalized support and opportunities for collaboration. He is committed to helping states create informed education policy and better education systems for students, from early learning through postsecondary and workforce. Prior to joining Education Commission of States in 2012, he built a strong public service record working with officials in Washington, D.C., as well as many governors, legislators and education policy organizations.



BRUCE ATCHISON

Director, Early Learning
Institute, Education
Commission of the States

Bruce has more than 35 years of experience in early learning and education policy. He currently directs all early learning work at Education Commission of the States. He was in the classroom teaching kindergarten and pre-K for more than 10 years, served in two governors' policy offices, was chief of staff for a lieutenant governor, served as executive vice president of a state child advocacy organization and was the executive director of the Colorado Early Learning Partnership focused on pre-K-3 alignment. He was faculty at the University of Denver, and then at the University of Colorado.



**DR. DEBORAH
LOEWENBERG BALL**

@deborah_ball

Director, TeachingWorks,
Professor, University of
Michigan

Deborah is the William H. Payne Collegiate Professor of Education at the University of Michigan and the director of TeachingWorks. Ball taught elementary school for more than 15 years and continues to teach mathematics to elementary students every summer. Her research focuses on the work of teaching mathematics in ways that disrupt the reproduction of inequity and that make it possible for young people to enjoy and engage in mathematics in and out of school. She is an expert on teacher education and her current work centers on how to improve beginning teaching.



DR. LEXI ANDERSON

@Landerson313

Policy Analyst, Education
Commission of the States

As a policy analyst in the Postsecondary and Workforce Development Institute, Lexi works on many postsecondary topics, including transfer and articulation, adult students, postsecondary attainment and credit accumulation. Prior to working at Education Commission of the States, Lexi worked on multiple college campuses as an academic adviser and with orientation programming. Lexi earned a bachelor's degree in political science, a master's degree in leadership in student affairs and a doctorate in higher education.



KIRSTEN BAESLER

State Superintendent,
North Dakota Department of
Public Instruction

Kirsten is the elected Superintendent of the North Dakota Department of Public Instruction. She was elected to her second term in November 2016. Superintendent Baesler had a 23-year career with Bismarck's public schools — North Dakota's largest school district. Superintendent Baesler also served on the Mandan school board for nine years. She is a member of the board of directors for the National Dropout Prevention Center at Clemson University and a member of the Joe Foss Institute's Civics Education Initiative advisory board. Superintendent Baesler has three adult sons.



DR. PAUL J. BAUMANN

Director, National Center
for Learning and Civic
Engagement, Education
Commission of the States

Paul is proud to be a part of your education policy team at Education Commission of the States! He has worked in Education Commission of the States' National Center for Learning and Civic Engagement since 2010 and has served as its director since 2011. He earned his Ph.D. in education from the University of Maryland-College Park, where his research focused on issues of teacher quality, teacher education and teacher compensation. Prior, Paul taught vocal music for 10 years at a high school in suburban Maryland and in the District of Columbia Public Schools.

Session **SPEAKERS**



DR. MICHAEL BAUMGARTNER

Executive Director, Nebraska Coordinating Commission for Postsecondary Education

Michael is the executive director of Nebraska's Coordinating Commission for Postsecondary Education. Prior to joining the Commission, he served as vice president for finance and special projects at Complete College America, deputy director for budget and planning and executive deputy director at the Illinois Board of Higher Education, and associate commissioner for facilities and financial affairs at the Indiana Commission for Higher Education. Dr. Baumgartner has degrees in political science from the University of Missouri, The Ohio State University and Indiana University.



DR. ALLISON C. BELL

@allisail

Director, HCM Strategists

Alli is an education policy specialist who provides policymakers, states and systems with support and expertise to increase access to affordable, high-quality postsecondary education, particularly for working adults and racial and ethnic minorities. Prior to joining HCM Strategists, Alli served as an associate research scientist at the National Center for Education Statistics and as a policy analyst for the State Higher Education Executive Officers Association. Alli holds a bachelor's degree from Stanford University and a master's degree and Ph.D. from the University of Michigan.



CASEY M. BETHEL

@2017GATOTY

2017 Georgia Teacher of the Year

Casey, the 2017 Georgia Teacher of the Year, is a passionate educator and an accomplished scientist. He teaches AP Biology and Physics, hosts elementary STEM exhibitions and tutors middle school students in science and math. He is also an adjunct professor at two local universities. Lessons he designed have been published in the Journal of Chemical Education. Away from school, he conducts biochemistry research at the Georgia Institute of Technology, hoping to find cures for Alzheimer's and glaucoma. His most recent publication appeared in Nature-Chemical Biology.



TERRI E. BONOFF

@Terri_Bonoff

Former Minnesota State Senator, Higher Education Workforce Development Chair

Prior to her time in the Minnesota Senate, Terri had a successful 20-year career in the private sector before leaving to be at home with four teenagers. This move was highlighted in a TIME magazine article discussing a trend of executive women taking "teen leaves." Bonoff was first elected to the Minnesota Senate in 2005. As Chair of Higher Education/Workforce Development, she created a nationally acclaimed program called the Minnesota PIPELINE Project. This project expands dual training by partnering employers and students to address both student debt and the skills gap. Bonoff also authored the Minnesota attainment goal.



ANNE BOWLES

@annebowles

Director, Special Projects & Initiatives, Achieve

In her role as director of special projects and initiatives, Anne supports strategic and operational planning activities, organizational knowledge management and intra-departmental initiatives across Achieve. Anne first joined Achieve in February 2012, where she honed her expertise in education advocacy and policy, first as a senior policy associate on Achieve's State Policy and Implementation Support Team, and then as associate director of strategic initiatives, where she led Achieve's Coalition Support Network — a network of 12 state-based advocacy coalitions that support CCR policies.



DR. AARON BROWER

Provost & Vice Chancellor, University of Wisconsin-Extension (UW-Extension)

Aaron is the provost and vice chancellor of UW-Extension, a position he began in 2012. As provost and vice chancellor, Brower provides strategic and operational leadership as UW-Extension's chief academic officer. He oversees its four major divisions (Continuing Education and Online Learning, Public Radio and Television, Business and Entrepreneurship, and Cooperative Extension), provides administrative support for business and finance, and develops and supports collaborative programs, including the UW Flexible Option — the competency-based educational program for the UW System.

Session **SPEAKERS**



DAN BROWN

@DanBrownTeacher

Co-Director, Educators Rising

Dan is co-director of Educators Rising, a national network for aspiring educators. He is a National Board Certified Teacher who taught elementary school and high school English in New York City and Washington, D.C. He is the author of the first-year-teaching memoir, "The Great Expectations School: A Rookie Year in the New Blackboard Jungle." His writing has appeared in Educational Leadership, the Boston Globe, New York Daily News and Education Week, among other publications. He holds degrees from Teachers College, Columbia University and New York University.



GOV. PHIL BRYANT

Mississippi

Gov. Phil Bryant learned the value of hard work and importance of education early on. He led Mississippi in implementing transformational public education reforms, promoting economic development and building a competitive business climate that attracts major employers. Before becoming the state's chief executive, Bryant was lieutenant governor from 2008-11. He served as state auditor and represented his legislative district in the House of Representatives for five years. Bryant began his career as deputy sheriff in Hinds County and later worked as an insurance investigator before being elected to the House of Representatives in 1991.



GOV. STEVE BULLOCK

@GovernorBullock

Montana

Gov. Steve Bullock, Montana's former attorney general, was elected the state's 24th governor in November 2012. His priorities include job creation, improving education and increasing government effectiveness. As a father, he recognizes the need for high-quality public education. In his first legislative session, Bullock secured a tuition freeze at Montana colleges and universities. He secured historic levels of funding for the state's elementary, middle and high schools and pushed for Montana to join the other 44 states that made meaningful investments in early childhood programs. He received his J.D. with honors from Columbia University Law School in New York.



TRISTAN DENLEY

Vice Chancellor for Academic Affairs, University System of Georgia

Tristan currently serves as Vice Chancellor for Academic Affairs for the University System of Georgia and held previous leadership positions at the Tennessee Board of Regents, Austin Peay State University, University of Mississippi and abroad. Dr. Denley's hands-on approach in initiatives impacting student success, and his creation of the Degree Compass system at Peay, has earned him national recognition. His work uses data-informed approaches to implement system scale initiatives surrounding college completion, education redesign, developmental education and advising.



SUE DESMOND-HELLMAN

CEO, Bill & Melinda Gates Foundation

Sue is a physician, scientist and philanthropist, who has devoted her career to improving the human condition. As a pioneer in healthcare for more than 30 years, she's driven major developments toward the eradication of disease, poverty and inequity. Trained as an oncologist, she helped develop two of the first gene-targeted therapies for cancer, and in 2009 Forbes magazine named her one of the world's seven most "powerful innovators," calling her "a hero to legions of cancer patients." Immediately prior to joining the Bill & Melinda Gates Foundation in 2014, Dr. Desmond-Hellmann was the first female chancellor of the University of California at San Francisco. She serves on the board of directors at Facebook Inc.



AMY ELLEN DUKE-BENFIELD

@AEDukehighered

Senior Policy Analyst, Center for Law and Social Policy (CLASP)

Amy is a senior policy analyst at CLASP's Center for Postsecondary and Economic Success. She analyzes and advocates for postsecondary education and training policies that better serve low-income adults and other non-traditional students and provides technical assistance to governments and advocates. She also directed the Benefits Access for College Completion initiative, which sought to increase access to public benefits and financial aid for low-income students. She has a bachelor's degree from Swarthmore College and a master's degree from Emory University.

Session **SPEAKERS**



DR. TONY EVERS

@WISuptTonyEvers

State Superintendent,
Wisconsin Department of
Public Instruction

Tony was first elected Wisconsin State Superintendent of Public Instruction in April 2009. He was re-elected to the post in 2013 and 2017. Tony has dedicated his life to public education in Wisconsin, working with the students, parents and citizens of Wisconsin for more than 38 years as a teacher, principal, superintendent and regional administrator. Tony Evers has been married for 43 years to his wife, Kathy, they met in kindergarten. Tony and Kathy are the parents of three adult children and have six grandchildren.



MEREDITH FERGUS

Manager Financial Aid
Research/Statewide
Longitudinal Education Data
System (SLEDs), Minnesota
Office of Higher Education

Meredith is the manager of financial aid research and Minnesota's SLEDs for the Minnesota Office of Higher Education. Her responsibilities include cost projections for Minnesota's need-based financial aid program (the Minnesota State Grant), monitoring Minnesota's educational attainment progress, and research on college access, higher education finance and student financial aid. Prior to joining the Office of Higher Education, Meredith worked in enrollment management and also assisted colleges in collaborative research and policy initiatives.



DR. BLAKE FLANDERS

President and CEO, Kansas
Board of Regents

Blake serves as president and CEO for the Kansas Board of Regents. Previously, he served the organization as vice president for workforce development, where he oversaw targeted expansion of the state's engineering and nursing programs, led the state's efforts to better align industry-recognized credentials with credit-bearing career technical programs, directed a new state funding approach for community and technical colleges, and was key in the creation of an Excel in CTE program offering state-funded tuition for all high school students enrolling in eligible coursework.



JOE GARCIA

@WICHEJoeGarcia

President, Western Interstate
Commission for Higher
Education (WICHE)

Joe was appointed president of WICHE in June 2016. He served as the Lieutenant Governor of Colorado and as the executive director of the Colorado Department of Higher Education, beginning in 2011. During his time as lieutenant governor and as the state higher education executive officer for Colorado, he focused on increasing equity in outcomes for all students, particularly those from low-income backgrounds and communities of color. Prior to being elected lieutenant governor, he served as president of Colorado State University-Pueblo. Garcia earned his B.S. in Business at the University of Colorado-Boulder and his J.D. from Harvard.



JESSICA GIBSON

@jessicagibsonTN

Assistant Executive Director
for Adult Learner Initiatives,
Tennessee Higher Education
Commission (THEC)

Jessica leads THEC's initiatives focused on increasing education attainment rates among adults, including those who started college but did not complete a degree or credential. Through this work, she contributes to strategic planning on Gov. Bill Haslam's Drive to 55 initiatives, including Tennessee Reconnect, the component of the initiative focused on adult learners. Jessica administers several projects focused on college productivity and adult student completion, community, business and higher education engagement, student advising and prior learning assessment initiatives.



MICHAEL GRIFFITH

School Finance Strategist,
Education Commission of the
States

Mike has worked in the field of school finance policy for the past 19 years with Education Commission of the States, the consulting firm of Augenblick & Myers and the Michigan State Senate. His research focuses on the condition of state budgets, the adequacy and equity of state finance formulas and promising practices in funding programs for high-need students. Mike holds a bachelor's degree from Michigan State University, a master's degree in public administration from The Ohio State University and a master's degree in education management from Trinity College in Dublin, Ireland.

Session **SPEAKERS**



BENJAMIN I. HAYES

@benian

Chief Accountability Officer,
Washoe County School
District

Ben is the chief accountability officer for the Washoe County School District. He is dedicated to providing the local and broader education community with data products, research and support to make effective decisions based on high-quality, user-friendly data. Mr. Hayes serves on several state committees to inform accountability policy and practice and currently serves on the Collaborative for Academic, Social and Emotional Learning National Assessment Work Group, and the task force for Next Generation K-12 Indicator and Response Systems organized by the Everyone Graduates Center at Johns Hopkins University.



JAHANA HAYES

@jahanahayes

2016 National Teacher of the
Year

Jahana, a history teacher at John F. Kennedy High school, was named 2016 National Teacher of the Year and recognized by President Barack Obama in a White House ceremony. Since then, she has been traveling the nation and the world to represent teachers and advocate on behalf of the education profession. Her students describe her enthusiasm for her work as infectious. Over the last decade, she taught world history, roots of American citizenship, U.S. history, civics and geography and African-American history.



ANGELA K. HEMINGWAY

@AngHemingway93

Executive Director, Idaho
STEM Action Center

Angela spent 14 years teaching in high school and university STEM classrooms, from AP Biology and AP Statistics to advanced research and microbiology. In August 2015, Gov. C.L. "Butch" Otter appointed her the executive director of the newly-formed Idaho STEM Action Center. Her top priorities include expanding Idaho's STEM pipeline and increasing diversity, providing STEM grants and professional development to educators, supporting various competitions, creating an online, statewide mentorship platform and partnering with industry and universities to ensure Idaho's long-term economic prosperity.



CAROLINE KING

Program Director, Title I Arts
Integration Initiative, San
Diego Unified School District

Caroline is program director of the Title I Arts Integration Initiative, San Diego Unified School District. She is a native of San Diego and has been an administrator for more than 18 years, culminating in leadership of Zamorano Fine Arts Academy — one of the largest elementary schools in the state. She is currently responsible for arts integration in 22 schools with the goal to narrow the achievement gap and improve school climate through the arts. Caroline has embraced the arts as a tool for motivating and validating the cultural experiences of the communities and the children she serves.



MICHAEL KIRST

State Board President,
California State Board of
Education

Michael is the president of the California State Board of Education and a professor emeritus of education at Stanford University. He has been on the Stanford faculty since 1969. Kirst received his Ph.D. in political economy and government from Harvard. Before joining the Stanford University faculty, Kirst held several positions with the federal government, including staff director of the U.S. Senate Subcommittee on Manpower, Employment and Poverty and director of program planning for Elementary and Secondary Education at the U.S. Office of Education.



JOE LANDON

Executive Director, California
Alliance for Arts Education

Joe is the executive director of the California Alliance for Arts Education, a nonprofit organization that advances visual and performing arts education in K-12 public schools. Since joining the Alliance in 2008, he helped the Alliance establish a statewide, local advocacy network, sponsor legislation advancing arts education, including the establishment of dance and theatre credentials for California teachers, and promote the advancement of Title I funding for arts education strategies that support Title I goals both in California and across the nation.

Session **SPEAKERS**



BOB LAROCCA

@blarocca

Director of Policy and Communications, Transforming Education (TransformEd)

At TransformEd, Bob is responsible for collaborating with policymakers and crafting the organization's policy and communications plan. Bob taught at multiple Boston-area schools, including Nativity Prep, a middle school that serves low-income students of Boston. He also served as a senior adviser on state and local political campaigns, developing policy positions and providing strategic communications advice to candidates. Bob holds an undergraduate degree from Georgetown University, a master's degree from the London School of Economics and a law degree from Boston College Law School.



TERESA LUBBERS

Commissioner, Indiana Commission for Higher Education

Teresa was appointed in 2009 to serve as Commissioner for Indiana's Commission for Higher Education — the coordinating agency charged with ensuring the state's postsecondary education system is aligned to meet the needs of students and the state. Prior to joining the Commission, Lubbers served in the Indiana State Senate for 17 years, leading on education and economic development issues as chair of the Senate Education and Career Development Committee.



DR. SHARMILA BASU MANN

@SharmilaMann

Director, K-12 Institute, Education Commission of the States

Sharmila serves as the director of the K-12 Institute at Education Commission of the States. In her role, she sets the strategic direction for the institute, guides the team's priorities in policy and research, and fosters internal and external relationships that expand the reach of the team's products and expertise. She brings more than 15 years of education policy experience to her role, including 10 years at the State Higher Education Executive Officers Association, engaging with state and federal policymakers, funders and national associations.



ERIKA MCCONDUIT

President and CEO, Urban League of Louisiana

Erika serves as president and CEO of the Urban League of Louisiana, whose mission is to empower communities and change lives. Dedicated to ensuring education equity, McConduit is heavily engaged in education policy, providing direct service and advocacy in quality early learning, K-12 and postsecondary opportunities. She was appointed to the Board of Supervisors for the Louisiana Community and Technical College System, Mayor Mitchell J. Landrieu's Education Task Force, Louisiana Superintendent of Education's Student Task Force and the Louisiana Department of Education Alternative Education Committee, among others.



DON MEANS

@donmeans

Director, Gigabit Libraries Network (GLN)

Don founded GLN in 2012 as an open ad-hoc global collaboration of tech-savvy, innovation libraries in the Libraries WhiteSpace Project to dramatically expand availability of library Wi-Fi and public access in communities everywhere. He is principal of Digital Village Associates, a Sausalito, Calif., based consultancy since 1994, focused on community technology strategies. He also serves as director/founding chairman of the Schools, Health and Libraries Broadband Coalition. Don is active in the Global Connect Initiative, a World Bank project initiated in 2015 to bring the remaining 4 billion unconnected people online.



DR. DANIELLE MEZERA

Principal Consultant, DCM Consulting

In December 2011, Danielle assumed the position of assistant commissioner for College, Career & Technical Education at the Tennessee Department of Education. In March 2017, Danielle left to head up DCM Consulting, specializing in K-12 and postsecondary education and the intersection of these to inform strong education-to-career learning pathways. As assistant commissioner, Danielle oversaw the state's middle and secondary CTE course curricula, early postsecondary courses, capstone exams, school counseling, secondary-postsecondary matriculation and work-based learning. Danielle holds a B.A., M.Ed. and Ph.D.

Session **SPEAKERS**



CHRISTOPHER MITCHELL

@communitynets

Director, Community
Broadband Networks, Institute
for Local Self-Reliance

Christopher is a national expert on local government broadband policy. He was honored as one of the 2012 Top 25 in Public Sector Technology by Government Technology. He shows up in public radio interviews or op-ed pages around the country. His work has been used in White House reports and been cited in the Wall Street Journal, New York Times and USA Today. Mitchell runs MuniNetworks.org, the comprehensive clearinghouse of information about community broadband with an interactive map of more than 450 networks and a podcast with more than 240 episodes.



DR. CARISSA MOFFAT MILLER

@CMoffatMiller, @CCSSO

Deputy Executive Director,
Council of Chief State School
Officers (CCSSO)

Carissa joined CCSSO as the deputy executive director in February 2013. In this role, she ensures all CCSSO activities align with chiefs' priorities, including overseeing the organizations' advocacy at the federal level, communications strategy and all membership meetings. Miller previously served as the deputy superintendent of the 21st Century Classroom Division at the Idaho State Department of Education. Prior, she worked for the Idaho State Board of Education overseeing assessment and accountability.



DR. DARYL MONEAR

Associate Director for
Academic Affairs and
Policy, Washington Student
Achievement Council

As associate director for academic affairs and policy at the Washington Student Achievement Council, Daryl leads efforts in the areas of System Design and Capacity, Higher Education and Workforce Alignment, and Regional Educational Needs Assessment. He is the primary author of the Skilled and Educated Workforce report, prepared with the Washington State Board for Community and Technical Colleges and Workforce Board. He works closely with Gov. Jay Inslee's STEM Education Innovation Alliance to expand student opportunities for STEM education and improve STEM workforce alignment in the state.



ALLISON MUHLENDORF

@ALSRA

Executive Director, Alabama
School Readiness Alliance
(ARSA)

Allison leads ASRA's efforts to promote the expansion of high-quality, voluntary pre-K in Alabama. She previously served as state policy associate for Pre-K Now, a campaign of The Pew Charitable Trusts. Allison has also worked for the Oregon State Senate and Oregon's Children's Institute. She holds a B.A. from Willamette University and a M.A. in education policy from the University of Maryland. Muhlenдорf received the 2016 President's Award from the Southern Early Childhood Association for her contributions to the field. Allison began her career as a pre-K classroom assistant.



DR. EMILY PASSIAS

@emilyjpassias

Director, Office of Career-
Technical Education, Ohio
Department of Education

Emily is director of the Office of Career-Technical Education at the Ohio Department of Education, where she focuses on state policies aimed at preparing students for college and careers. Her focus includes expanding career pathway options for students and ensuring all career-technical education programs are of high quality and aligned to the needs of Ohio businesses. Emily led the department's industry credential initiatives, ensuring students are encouraged to earn high-demand credentials that Ohio employers value.



MICHAEL PETRILLI

@MichaelPetrilli

President, Thomas B.
Fordham Institute

Mike is president of the Thomas B. Fordham Institute, research fellow at Stanford University's Hoover Institution, executive editor of Education Next and a distinguished senior fellow for Education Commission of the States. He is the author of "The Diverse Schools Dilemma" and editor of Education for Upward Mobility. Petrilli helped create the U.S. Department of Education's Office of Innovation and Improvement and the Policy Innovators in Education Network.

Session **SPEAKERS**



KELLY POLLITT

@KellyPollitt

Chief Strategist, Policy and Alliances, National Association of Elementary School Principals (NAESP)

Kelly leads NAESP's policy, advocacy and project-based initiatives on behalf of the nation's pre-K-8 principals. Her work advances the perspective of elementary- and middle school-level principals in federal policy reform and raises the profile of school leadership in public affairs. Her work includes a portfolio of projects with special emphasis on the education of young children or policy and practical support for pre-K-3 education and leadership and cultivating practical resources for principals to meet the learning needs of young children in the early grades.



JOHN ROBERT PRUETTE

Executive Director, North Carolina Department of Public Instruction/Office of Early Learning

John moved into the role of executive director of the North Carolina Office of Early Learning in March 2007, where he led the successful integration of multiple publicly funded state and federal pre-K programs. Currently, his work is focused on structural reform in the early grades and strengthening the pre-K-3 learning continuum in North Carolina's schools.



MADELINE PUMARIEGA

@MadyMIA

Chancellor, Division of Florida Colleges

Madeline is Chancellor of the 28 colleges that make up the Florida College System, which serves more than 800,000 students. Recognized among the top in the nation, the system is committed to maintaining the highest-quality programs to meet Florida's growing workforce needs and to make sure college is accessible and affordable. Appointed as the first female and Hispanic Chancellor in August 2015, Pumariega has worked to build on successes of the Florida College System. Her goal is to ensure that all students have a pathway to complete their degree or professional credential.



DR. M. KAREGA RAUSCH

@KaregaRausch

Vice President, Research and Evaluation, National Association of Charter School Authorizers (NACSA)

Karega is the vice president of research and evaluation for NACSA, where he leads the development of a research base of quality authorizing practices and policies. He previously led education reform initiatives for two Indianapolis mayors — of different political parties — as the Indianapolis Director of Educational Innovation and Charter Schools. Karega is a nationally recognized researcher and presenter on charter school authorizing, racial/ethnic disproportionality in school discipline and special education reform.



DR. SCOTT RIDLEY

@dalescottridley

Dean, Texas Tech University College of Education

Scott is the dean of the College of Education at Texas Tech, appointed in 2011. With all academic programs reformed during his tenure to a competency-based orientation, the reformed teacher education program, Tech Teach, has won acclaim from school districts, and national and international accrediting bodies. Dr. Ridley formerly served 21 years at Arizona State University. He continues to seek collaborative school/university/community college/business ventures that advance education and achievement to higher levels of excellence.



DR. SHANNON RILEY-AYERS

@riley_ayers

Associate Research Professor, The National Institute for Early Education Research at Rutgers University (NIEER)

Shannon is an associate research professor at NIEER. She currently conducts research and provides technical assistance in pre-K-3, with a focus on teaching quality, assessment and professional learning. She is part of the senior management team at the Center for Enhancing Early Learning Outcomes, where she provides technical assistance to state education agencies with a focus on K-3.

Session **SPEAKERS**



GERARD ROBINSON

@gerard_924

Resident Fellow, American Enterprise Institute (AEI)

Gerard is a resident fellow at AEI, where he works on education policy issues, including choice in public and private schools, regulatory development and implementation of K-12 laws, the role of for-profit institutions in education, prison education and reentry, rural education, and the role of community colleges and Historically Black Colleges and Universities in adult advancement. Before joining AEI, Robinson served as commissioner of education for the State of Florida and secretary of education for the Commonwealth of Virginia.



REP. DENNIS ROCH

New Mexico State Representative, New Mexico Legislature

Dennis serves on the House Education, House Rules and Order of Business, and House State Government, Indian and Veterans Affairs Committees. In addition, he chairs the Legislative Education Study Committee. Roch is a lifelong educator and strongly supports New Mexico's small, rural schools. He advocates for local control in student assessment and teacher evaluation. Roch is a Steering Committee member of Education Commission of the States. He received his teaching degree from Eastern New Mexico University and his M.A. while working for U.S. Sen. Pete Domenici.



DR. JASON SACHS

Executive Director of Early Childhood, Boston Public Schools (BPS)

Jason joined BPS as director of early childhood in 2005 to oversee the expansion of K-1 classes and coordinate K-2 curriculum and professional development.



DR. AALIYAH SAMUEL

@Asamuel2020

Director, Education Division, National Governors Association

Aaliyah is the director of education at the National Governors Association Center for Best Practices, where she works on education policies. Dr. Samuel's work has focused on language development programs, impact of evidenced-based programs, education systems building, and alignment of education policies, program practices and education reform. Dr. Samuel holds a bachelor's degree in psychology from Tuskegee University, a master's degree in teaching from the University of South Florida, and a specialist degree and a doctoral degree in organizational leadership from Nova Southeastern University.



CLAUDIO SANCHEZ

@CsanchezClaudio

Education Correspondent, National Public Radio (NPR)

Claudio, former elementary and middle school teacher, is an education correspondent for NPR. He focuses on the three p's of education reform: politics, policy and pedagogy. Sanchez's reports air regularly on NPR's award-winning programs Morning Edition, All Things Considered and Weekend Edition. Sanchez is a native of Nogales, Mexico, and a graduate of Northern Arizona University, with post-baccalaureate studies at the University of Arizona in Tucson.



DR. MELODY SCHOPP

@melody5552

Secretary of Education, South Dakota Department of Education

Melody is South Dakota's Secretary of Education. Schopp was appointed by Gov. Dennis Daugaard in April 2011. In addition to serving as the treasurer of Education Commission of the States, Schopp currently serves as the president of the Council of Chief State School Officers. Her platform is focused on elevating the teaching profession. Schopp was instrumental in passing landmark legislation in South Dakota in 2016, which increased sales tax in the state dedicated to teacher salaries, as well as funding to support retention efforts. Her undergraduate degree is from University of Mary, North Dakota and Ph.D. from the University of Nebraska, Lincoln in 2008.

Session **SPEAKERS**

**NATALIE SHIRLEY**

Oklahoma Secretary of Education and Workforce Development, Office of Gov. Mary Fallin

Natalie concurrently serves as president of Oklahoma State University-Oklahoma City (OSU-OKC) and Oklahoma Secretary of Education and Workforce Development. Named OSU-OKC president in 2011, Shirley is the first female president in the OSU system. From 2007 to 2011, Shirley served in then Gov. Brad Henry's cabinet as Oklahoma's Secretary of Commerce and Tourism. She also served as president of Investment Company Institute Mutual Insurance Group in Washington, D.C. She graduated from OSU and earned a law degree from the University of Oklahoma.

**HANNA SKANDERA**

Secretary of Education, New Mexico Public Education Department

Hanna has led the transformation of New Mexico public schools as Secretary of Education for the past seven years. Graduation rates are at an all-time high, AP enrollment has doubled and 30,000 more students are in "A" and "B" schools. Previously, Skandera served as a deputy chief of staff under U.S. Secretary of Education Margaret Spellings, undersecretary of education under Gov. Arnold Schwarzenegger and deputy commissioner under Gov. Jeb Bush. Skandera was also a research fellow for the Hoover Institution at Stanford University.

**DR. LAURIE SMITH**

Education/Workforce Development Policy Advisor, Office of the Governor, Mississippi

Laurie serves as senior education advisor to Gov. Phil Bryant. Before joining the governor's team, Smith worked with the University of Mississippi Barksdale Reading Institute and Mississippi State University Early Childhood Institute conducting research relevant to improving the state plan for early childhood education. She is a former classroom teacher in Arizona, New Mexico and Mississippi, with more than 25 years of experience in research, education, workforce development and teaching. Smith holds a doctorate from Mississippi State University in education curriculum and education leadership.

**DR. LAURA SMYTH**

Program Director, Title I Initiative, California Alliance for Arts Education

Laura is an experienced consultant, advocate and adviser with more than two decades working in the arts education field, including three years as senior associate at the Arts Education Partnership. Laura is interested in the intersection of in-school and out-of-school time, partnership between community and youth organizations, Title I and education equity, and making research and policy information accessible to a general audience. She is currently the program director for the California Alliance for Arts Education's Title I Initiative.

**SEN. GARY LEE STEVENS**

Senator, Alaska State Senate

Gary has served in the Alaska State Legislature since 2001 and in the Alaska State Senate since 2003. He served as the President of the Senate for four years between 2009 and 2013. He served as Chair of the Committee on Committees, Chair of the Word Trade Committee, Chair of Education, Chair of Legislative Council and a member of the Senate Rules, Resources and Education Committees, as well as the Select Committee on Legislative Ethics. Currently, he serves as the Chair of the Legislative Budget and Audit Committee.

**URI TREISMAN**

Education Commission of the States Distinguished Senior Fellow

Uri is Professor of Mathematics and of Public Affairs at The University of Texas at Austin, where he is the Founder and Director of the University's Charles A. Dana Center. He served on the AACC 21st Century Commission on the Future of Community Colleges and serves on the boards of many entrepreneurial nonprofits committed to improving American education. He was named a MacArthur Fellow in 1992 for his work on nurturing minority student high achievement in college mathematics and named 2006 Scientist of the Year by the Harvard Foundation for his outstanding contributions to mathematics.

Session **SPEAKERS**



DR. KAREN M. TRUJILLO

@karentrujillo

State Director, Educators Rising New Mexico

Karen has been an educator in New Mexico for more than 20 years. In that time, she served as a high school math teacher, an administrator, a professional development specialist, a research faculty member and the director of outreach for the College of Education at New Mexico State University (NMSU). She currently serves as the state director for Educators Rising New Mexico and the director of the STEM Outreach Alliance Research Lab at NMSU. Her primary focus is supporting the teacher pipeline in New Mexico and evaluating the effectiveness of K-12 STEM outreach efforts for students and teachers.



DR. MARGIE VANDEVEN

@MoCommissioner

Commissioner of Education, Missouri Department of Elementary and Secondary Education

Margie was appointed Missouri's sixth Commissioner of Education by the state board of education and assumed her duties on Jan. 1, 2015. She has 15 years of experience as a classroom teacher and more than 11 years of experience in the state education agency. Dr. Vandeven is passionate about ensuring all students are prepared for postsecondary success. A native of Missouri, she earned a bachelor's degree from Missouri State University, a master's degree from Loyola College in Maryland and a doctorate of philosophy in educational leadership from Saint Louis University.



CLAIRE VOORHEES

@csvoorhees

Director, K-12 Reform, Foundation for Excellence in Education

Claire is the director of K-12 reform at the Foundation. Previously, Claire worked at HCM Strategists and as an instructor at Koç University in Istanbul. Before spending time in Turkey, Claire was an associate at Hogan Lovells law firm and an associate director in the White House Domestic Policy Council. Claire began her career as a fourth-grade teacher at P.S. 43 in the South Bronx, N.Y. Claire earned a bachelor's degree from Duke University, a master of science in elementary education from Mercy College, and a master of public policy and a J.D. from Georgetown University.



ANDREW UJIFUSA

@AndrewUjifusa

Assistant Editor, Education Week

Andrew is an assistant editor at Education Week, where he is the federal policy and politics reporter. He co-authors the Politics K-12 blog.



SOFIA VILLA

Member, Educators Rising

Sofia is an undergraduate student at New Mexico State University (NMSU) majoring in Bilingual Elementary Education with a focus in math. She has been a member of Educators Rising for two years — one of those years was her senior year in Gadsden High School, which was the first year Educators Rising began in New Mexico. She was elected president in her high school and competed in the Educators Rising Conference hosted by NMSU. Once she started college at NMSU, she joined Educators Rising as a freshman with the program also in its first year.



DAWN WALLACE

@AZGovEducation

Senior Advisor for Education, Arizona Office of the Governor

Dawn is the senior advisor to Gov. Doug Ducey for Education and Strategic Initiatives. She also serves as the director of the Governor's Office of Education. Dawn has an extensive background in K-12 and higher education policy, and the public budget process. She served as senior budget analyst for the Arizona Governor's Office of Strategic Planning and Budgeting in two previous gubernatorial administrations, before serving as the deputy director of research staff in the Arizona State Senate and the majority policy advisor for two Arizona House Speakers.

Session **SPEAKERS**



DR. SHIRLEY N. WEBER
Assemblymember, California
State Assembly

Shirley chairs the Assembly Budget Subcommittee on Public Safety. She also serves as a member of the Assembly Committees on Education, Higher Education, Elections, Budget, and Banking and Finance. Deeply committed to education, she served eight years as a school board member and president at San Diego City Schools. She translated her commitment to education and social justice into her ambitious legislative agenda, including bills on K-12 education reform, civil rights, protections for persons with disabilities and voting rights.



DR. GG WEISENFELD
Research Professor, National
Institute for Early Education
Research/Center on
Enhancing Early Learning
Outcomes

GG works on the annual State of Preschool Yearbook, and provides technical assistance on designing and implementing early childhood policies and programs. She previously held the position of Hawaii's director of the Executive Office on Early Learning in the Office of the Governor, worked on state-level birth to third-grade alignment as the P-3 director of early learning for Hawaii P-20, was a professor at CUNY, an Early Head Start/Head Start director and preschool teacher. She earned her master's from Bank Street College and doctorate from Teachers College Columbia University.



DR. DIANNA R. WENTZELL
Commissioner, Connecticut
State Department of
Education

Dianna has been an educator in Connecticut for more than 25 years. She was appointed Commissioner of Education by Gov. Dannel P. Malloy in April 2015. Dr. Wentzell began her career as a social studies teacher. She served in leadership roles including chief academic officer for the Connecticut State Department of Education, assistant superintendent in Hartford, Conn., and positions in South Windsor, Conn., and the Capitol Region Education Council.



ANNE WICKS
Director, Education Reform,
George W. Bush Institute

Before joining the George W. Bush Institute, Anne served for five years as associate dean for external relations at the University of Southern California's Rossier School of Education. In addition to leading a team with revenue, communications and engagement goals, she supported Dean Karen Symms Gallagher on a variety of special projects, including the launch and early growth of Ednovate Charter Schools. Over her career, she held management and resource development roles at organizations, including Teach for America.



STEPHANIE WOOD-GARNETT
@ALL4ED
Vice President, Policy to
Practice (P2P), Alliance for
Excellent Education

Stephanie is vice president of P2P and co-chair of the Diversity, Equity and Inclusion initiative. P2P provides technical assistance for states and districts with equity-focused high school redesign. Her previous roles include serving as assistant commissioner at the New York State Education Department, along with leadership roles in district central offices and national technical assistance centers. Dr. Wood-Garnett earned a B.A. from Dartmouth College; a M.A. from the George Washington University; and an Ed.D. from the University of Pennsylvania.



DR. CAREY M. WRIGHT
State Superintendent of
Education, Mississippi
Department of Education

Carey is the Mississippi State Superintendent of Education. She previously served as chief academic officer and deputy chief for the Office of Teaching and Learning for the District of Columbia Public Schools and as associate superintendent for the Office of Special Education and Student Services for the Montgomery County Public Schools in Maryland. She has been nominated twice for the Washington Post Outstanding Principal Award. Dr. Wright is president-elect of the board of directors of the Council of Chief State School Officers and is a member of Chiefs for Change.



Thank you **SPEAKERS!**

Thank you for contributing your invaluable knowledge and expertise!

Session **RESOURCES**

Session presentations and other valuable resources are available online: **bit.ly/ECSNF17Resources**.

YOUR Education Policy Team



MELISSA AGUILAR
Administrative
Assistant



ANTIONETTE GARCIA
Director, Administrative
Services



MATT PADILLA
Chief Financial Officer



AMY SKINNER
Director,
Communications



JEREMY ANDERSON
President



LISA GUILFOILE
State Relations
Associate



EMILY PARKER
Policy Analyst



BRIAN A. SPONSLER
Vice President, Policy/
Director, Postsecondary
& Workforce
Development



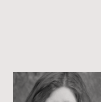
LEXI ANDERSON
Policy Analyst



NEAL HOLLY
Assistant Director,
Postsecondary
& Workforce
Development



ZEKE PEREZ JR.
Policy Researcher



JENNIFER THOMSEN
Director, Knowledge
and Research Center



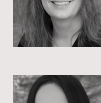
STEPHANIE ARAGON
Policy Analyst



KATIE HOPPER
Communications &
Social Media Strategist



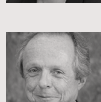
SARAH PINGEL
Senior Policy Analyst



ANH TRAN
Senior Accountant



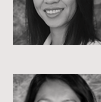
BRUCE ATCHISON
Director, Early
Learning



JOHN IVEY
Publications
& Distribution
Coordinator



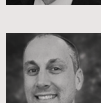
CASSANDRA QUILLEN
Communications
Specialist



ERIN WHINNERY
Policy Researcher



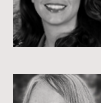
PAUL BAUMANN
Director, National
Center for Learning &
Civic Engagement



MATT JORDAN
Director, Strategic
Initiatives



ALYSSA RAFA
Policy Researcher



JOANNE WILKINS
Information
Technology Developer



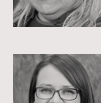
DANIELLE BELL
Meeting & Event
Specialist



ADRIENNE LUNDELL
Print & Web Designer



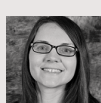
HUNTER RAILEY
Policy Researcher



MICAH ANN WIXOM
Policy Analyst



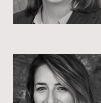
JANE R. BEST
Director, Arts
Education Partnership



KRISTINA MAGEAU
Communications
Specialist



MOLLY SARUBBI
Policy Researcher



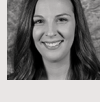
KATE WOLFF
External Affairs
Coordinator, D.C.
Office Manager



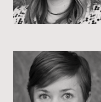
JAN BRENNAN
Project Leader



SHARMILA MANN
Director, K-12



DEVEN SCOTT
Policy Researcher



JULIE WOODS
Policy Analyst



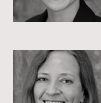
LOUISA DIFFEY
Policy Researcher



DENISE MILLER
Assistant Director,
Strong Start to Finish



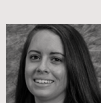
SARA SHELTON
Director,
State Relations



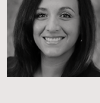
JENNIFER ZINTH
Director, High School
& STEM



MARY FULTON
Senior Policy Analyst



SARA OLÁN
Administrative
Assistant

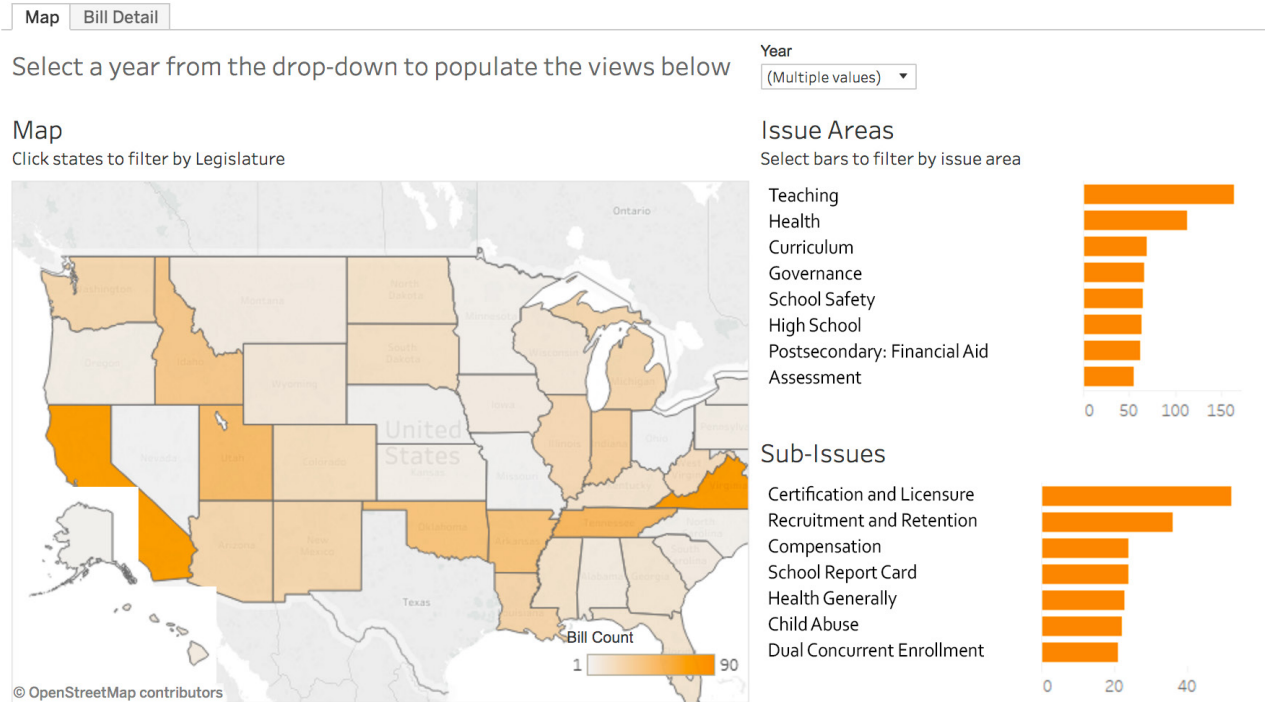


LAUREN SISNEROS
Policy Analyst

NEW!

State Education **POLICY TRACKING SYSTEM**

Education Commission of the State's new State Education Policy Tracking system allows web users to search by topic and subtopic for enacted and vetoed education bills across the country. Users can also narrow search results by year and state.



As your education policy team, you can count on Education Commission of the States to provide the most up-to-date research on education policies across the country.

SAVE THE DATE!

2018 National Forum ON EDUCATION POLICY


YOUR EDUCATION POLICY CONVENING.

JUNE 27-29, 2018
MARRIOTT WARDMAN PARK, WASHINGTON, D.C.

AT EDUCATION COMMISSION OF THE STATES,
we believe in the power of learning from experience.



WHAT WE DO

Education Commission of the States serves as a **partner to state policymakers** by providing **personalized support** and helping education leaders come together and **learn from one another**. Through our programs and services, policymakers gain the insight and experience needed to create **effective education policy**.

HOW WE DO IT

RESEARCH We compile information on education policies from early childhood through postsecondary education and workforce so state policymakers can make informed decisions.

REPORT We regularly issue relevant and timely reports providing education leaders with concise, factual overviews on the full spectrum of state education policies.

COUNSEL We are available to provide unbiased advice on policy plans, consult on proposed legislation and testify at legislative hearings and interim committees as third-party experts.

CONVENE We bring education leaders together within their states and across states to interact, collaborate and learn from each other.



WHAT SETS US APART

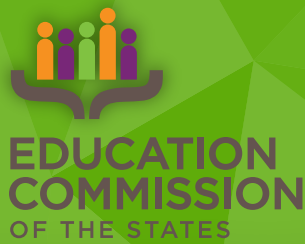
Full Education Spectrum Because education policy issues range from early childhood to postsecondary and workforce, we provide policymakers with comprehensive information on issues across the full education spectrum.

All Education Leaders We provide opportunities for all state education leaders from both political parties to collaborate, work together and learn from one another within a state, across states and across the aisle, resulting in better education systems for students.

Non-Partisan and Unbiased We provide policymakers with non-partisan, factual information so they are equipped to make educated decisions.

Learning from Experience Many states face similar education challenges. By sharing the facts about what has worked and what has not, states learn from each other without recreating the wheel.





TOP 50 NATIONWIDE

Education Commission of the States is honored to be named
in the Nonprofit Times' Best Nonprofits to Work For 2017.

#6 Nationwide

#2 Best Small Nonprofit

**Proudly and happily serving as
your education policy team!**



**EDUCATION COMMISSION
OF THE STATES**
Your education policy team.

700 Broadway, Suite 810, Denver, CO 80203
Learn more at www.ecs.org.