

2019 Annual Report





We **compile information** on **education policies** from **early childhood** through **postsecondary education** and **workforce**, so **state policymakers** can make **informed decisions**.

RESE

State Education Policy Tracking

Tracking state education policy across all 50 states and the District of Columbia is the crux of what we do at Education Commission of the States. We summarize education legislation for easier understanding, allowing us to spot trends and provide state leaders with relevant context around pressing education issues. We have summaries of enacted and vetoed legislation, dating back to the early 1990s and spanning the entire education spectrum — from early learning through the workforce — on our website.

Our one-of-a-kind, interactive [State Education Policy Tracking](#) resource, launched in 2017, allows users to search *enacted* and *vetoed* legislation across **more than 45 education issues and 275 sub-issues**. Search results can be filtered by state and or issue and sub-issue, or by keywords found in the bill titles. In 2019, our staff summarized **more than 1,500 bills** for this resource. The State Education Policy Tracking resource received **more than 19,500 pageviews** in 2019. In addition, our [archive](#) contains summaries of enacted and vetoed legislation dating back to 1996.

In addition to this resource, we also create a [State Education Policy Watch List](#), which captures *pending*, *enacted* and *vetoed* bills pertaining to trending issues or topics. (This list changes from year to year.) For this resource in 2019, we tracked **more than 3,500 bills** related to career and technical education, charter schools, financial aid, high school, postsecondary affordability and finance, postsecondary campus safety, postsecondary workforce development, school safety and teaching. The State Education Policy Watch List resource received **more than 9,000 pageviews** in 2019.

Tracking state legislation in this way informs much of the service and products we provide to state leaders across the country. Three of those most valued products are 50-State Comparisons, State Information Requests and Policy Snapshots.

RESEARCH

50-State Comparisons

These resources, often the most visited on our website, provide a comprehensive look at how all 50 states and the District of Columbia approach or address a specific education issue in law or statute. They allow policymakers to compare their states' laws against other states on topics such as teacher license reciprocity, open enrollment, statewide admissions, K-12 governance structures and many others. Currently, our website includes [45 50-State Comparisons](#).

In 2019, we compiled **five new 50-State Comparisons** and **updated nine existing ones**:

- [Arts Education Data Collection and Reporting](#)
- [Dual/Concurrent Enrollment Policies](#)
- [High School Graduation Requirements](#)
- [K-12 Funding](#)
- [K-12 School Safety](#)
- [K-12 Special Education Funding](#)
- [Need- and Merit-Based Financial Aid](#)
- [Postsecondary Campus Safety](#)
- [State Policy Models for Connecting Education to Work](#)
- [State Postsecondary Governance Structures](#)
- [States' School Improvement Policies](#)
- [Statewide Apprenticeships](#)
- [Statewide Longitudinal Data Systems](#)
- [Teacher Recruitment and Retention](#)

State Information Requests

One of the most unique and valued ways we assist state education leaders is by responding to their requests for information, typically within 48 hours, on pressing education needs or topics in their states.

In 2019, our policy staff completed **nearly 675 personalized responses** to State Information Requests. These requests came from every state and the District of Columbia, and the top categories include:

- **Early learning.**
- **Financial aid.**
- **Health.**
- **High school, including graduation requirements and dual enrollment.**
- **K-12 accountability.**
- **K-12 finance.**
- **K-12 governance.**
- **School choice.**
- **School safety.**
- **Teaching issues.**

Policy Snapshots

These reports capture recent state legislative activity on a given education policy issue and include examples of legislation — usually enacted, but sometimes failed or pending legislation, if there are lessons to be drawn from those. They also outline the importance of the policy issue and why it may be trending in states. Policy Snapshots pertain to a specified time period, generally the last legislative session, unless otherwise noted.

In 2019, we **compiled and released seven Policy Snapshots**:

- [Campus Sexual Assault Policies](#)
- [Career and Technical Education](#)
- [Open Enrollment](#)
- [Policies Addressing Guns on Campus](#)
- [Postsecondary Workforce Development Policies](#)
- [Student Mental Health](#)
- [Virtual School Policies](#)



We regularly issue **relevant** and **timely resources** that provide education leaders with **concise, factual information** on the **full spectrum** of **state education policies**.

REPO

Reports

In 2019, we published **22 reports**, diving into the current legislative context on education issues spanning the spectrum from early childhood through workforce development. We also introduced a new type of policy product — the Policy Outline.

POLICY OUTLINES

Policy Outlines are one-pagers designed to be easy reference guides for a specific topic.

- 📍 [Policy Levers to Improve School Safety](#)
- 📍 [Teacher Activism: Teacher Protest Actions on Education Policy](#)
- 📍 [Workforce Development Systems](#)




POLICY BRIEFS

Policy Briefs explore one facet of a larger education policy issue.

- 💡 [529 Education Savings Plans: Federal Action and State Policy Trends](#)
- 💡 [Accelerating Gains in K-12 Engineering Education](#)
- 💡 [The Arts in Schools of Choice](#)
- 💡 [Common Elements of Developmental Education Policies](#)
- 💡 [Education Policy Responses to the Opioid Crisis](#)
- 💡 [An Overview of Scholarship Tax Credit Programs](#)
- 💡 [Policy Considerations for STEAM Education](#)
- 💡 [Preparing Students for Learning, Work and Life Through STEAM Education](#)
- 💡 [Principles of Policy Design for Connecting Education to Work](#)
- 💡 [The Status of School Discipline in State Policy](#)
- 💡 [Trends in Pre-K Education Funding in 2017-18](#)

POLICY GUIDES

Policy Guides provide a comprehensive look at an education policy issue.

-  [An Analysis of State Postsecondary Governance Structures](#)
-  [Strengthening the Early Childhood Education Continuum](#)
-  [Using State Data Systems to Create an Information Culture in Education](#)



SPECIAL REPORTS


These products vary and are typically a specialized format; they include reports that are done in collaboration with other organizations.


- ★ [ArtScan at a Glance](#)
- ★ [ESSA: Mapping Opportunities for the Arts](#)
- ★ [Governors' Top Education Priorities in 2019 State of the State Addresses](#)
- ★ [Modernizing College Course Placement by Using Multiple Measures](#)
- ★ [Visual Arts Matter](#)



In 2019, we revamped our Ed Note blog to give it a facelift, make it more user-friendly and add a subscription option. We published **118 posts** in 2019, again covering the spectrum of education policy. Regular features include:

-  [President's Posts](#) from Jeremy Anderson.
-  [State Inquiries](#) posts that feature our State Information Requests.

 [From the Field](#) posts that highlight innovative work taking place in states.

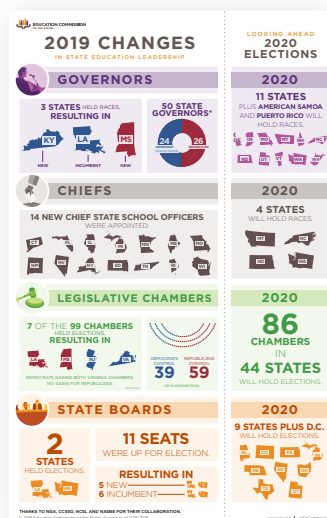
 [Policy Convenings](#) posts that capture some of the best practices shared at our Policy Academies and Thinkers Meetings.

Governors' State of the State Addresses

Each year, we follow governors' State of the State Addresses and summarize any education-related policy proposals or mentions in [an online resource](#). Based on this tracking, we are able to identify top trends among governors' priorities, as outlined in their addresses, which we compile in [a report](#) each year. We updated this resource in 2019, and it is searchable by *year and state* or *year and issue*.

Election Tracking

Each year, we closely track statewide elections, including education-related ballot measures, for the effects they might have on education policy decisions in each state — particularly as it pertains to leadership positions. A new governor, for example, can have a rippling effect on education policy if the governor is responsible for appointing state education chiefs or board members.



In 2019, in an [infographic](#), we captured changes to state education leadership, including governors, chiefs, legislative chambers and state boards. We also looked ahead to 2020 to see which seats will be up for election.



We provide **unbiased advice** on **policy plans**, **consult** on proposed **legislation** and **testify** at **legislative hearings** as **third-party experts**.

COUNSEL

Our state relations team, together with members of our policy staff, provides personalized state support, including technical assistance, testimony and presentations.

In 2019, we provided counsel services to all **50 states and the District of Columbia**; these services included in-person assistance in **45 states and the District of Columbia**.

Counsel services encompass a variety of work and cover the entire educational spectrum, from early education through workforce readiness. Our more popular outreach includes:

● STATE RELATIONS VISITS

These are opportunities to connect Commissioners (1) with Education Commission of the States staff and (2) with fellow Commissioners and policymakers in their states. State relations visits also foster conversations that help Education Commission of the States better identify pressing needs and trending issues for policymakers in education.

● TECHNICAL ASSISTANCE

This is a service we provide Commissioners, upon request, and it generally involves tailored support on a specific policy issue, development or implementation. It often involves more than one visit and includes follow-up support.

● TESTIMONY

The Education Commission of the States policy team is often requested to provide third-party expert testimony, based on its trusted research, at legislative committee hearings, board meetings and other venues.

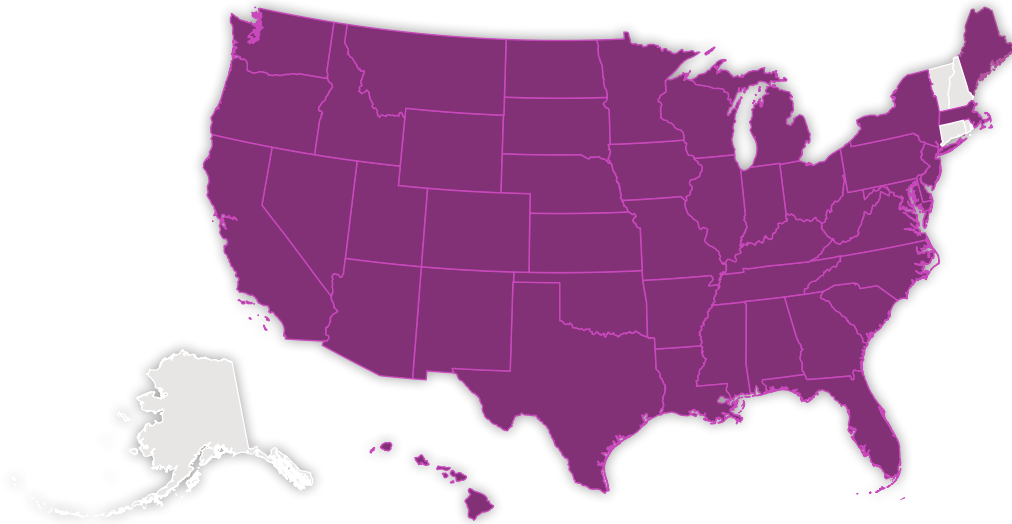
● PRESENTATIONS

Similar to testimony, Education Commission of the States staff create and deliver tailored presentations that describe the current context or landscape — both within a state and nationally — of a specific policy issue.

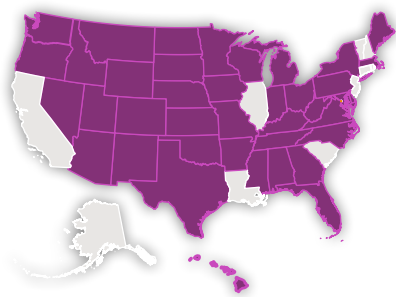
NSEL

2019 State Engagements

We visited **45 states** and **D.C.**

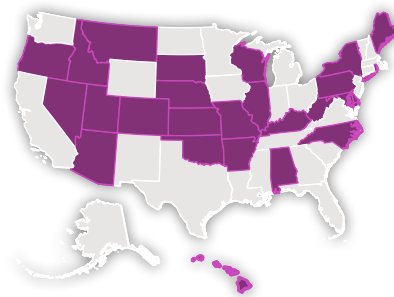


STATE RELATIONS VISITS



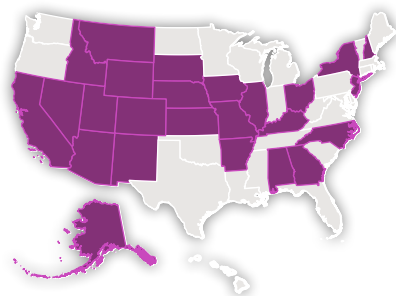
We visited
40 states.

Testimony



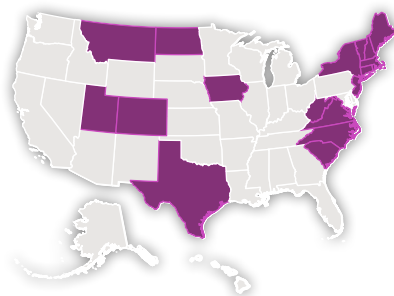
We provided
testimony in
25 states.

Technical Assistance



We provided
technical
assistance in
25 states.

Presentations



We gave
presentations
in **18 states.**



We bring **education leaders** together within and across states to **interact, collaborate** and **learn** from each other.

CONV

NATIONAL FORUM ON EDUCATION POLICY

Your education policy convening.

Our premier event, the National Forum on Education Policy took place near our home office in Denver, Colo., in 2019. We convened key education leaders — governors, legislators, state commissioners, higher education leaders, teachers and business leaders — to collaborate and share best practices for transforming policy and advancing student success. The three-day event featured some of the nation's top education speakers and included concurrent sessions, state spotlights and workshops on topics covering the entire educational spectrum, from preschool through workforce readiness.

The 2019 National Forum on Education Policy convened **658 registrants**, including **28 Steering Committee Members** and **87 Commissioners**.

Four ancillary meetings were held in conjunction with the 2019 National Forum on Education Policy:

- **Executive Directors of State Boards of Education** with 13 attendees from 13 states.
- **Governors' Education Policy Advisors** with 25 attendees from 20 states.
- **State Teachers of the Year** with 30 attendees from 30 states.
- **Legislative Education Staff Network** with 50 attendees from 29 states.

WINTER



WINTER COMMISSIONERS Meeting

Another annual event of ours, the **Winter Commissioners Meeting** offers a smaller format, presenting an opportunity for Commissioners and our staff to build relationships, engage in rich discussions and prepare for the year ahead.

In 2019, **215 registrants**, including **29 Steering Committee Members** and **68 Commissioners**, attended the Winter Commissioners Meeting in Denver.

Other Convenings

In 2019, we convened several small groups of education leaders from across the states to discuss and learn about specific education policies. These opportunities allow attendees to examine details and best practices, through sharing lessons and celebrations from each other's states.

A few highlights include:

- **Strong Start to Finish Annual Convening** in Denver with attendees from 19 states.
- **Chronic Absenteeism Symposium** in Denver with 31 attendees from 16 states.
- **STEAM Thinkers Meeting** in Washington, D.C., with 16 attendees from 5 states.
- **Connecting Education to Work Thinkers Meeting** in Denver with 14 attendees from 6 states.
- **Two Codes Thinkers Meeting** in Denver with 17 attendees from 9 states.
- **Arts Education Partnership Annual Meeting** in Alexandria, Virginia, with 197 attendees from 38 states.
- **Early Learning STEM Policy Academy** in Denver with 19 attendees from 15 states.
- **Computer Science Policy Academy** in Denver with 31 attendees from 12 states.
- **Integrated P-3 Systems Policy Symposium** in Denver with 70 attendees from 18 states.



Appendix

- A | **Education Commission of the States Leadership Team**
- B | **Standing Committees**
- C | **Steering Committee and Commissioners**
- D | **Partners and Policy Support**
- E | **Budget and Financial Summary**
- F | **Best of 2019**

Appendix A

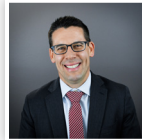
Education Commission of the States Leadership Team



JEREMY ANDERSON

PRESIDENT

303.299.3624 | janderson@ecs.org



BRIAN A. SPONSLER

VICE PRESIDENT, POLICY

303.299.3615 | bsponsler@ecs.org



ANTOINETTE GARCIA

Director, Administrative Services

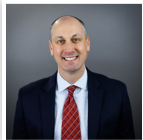
303.299.3610 | agarcia@ecs.org



SARA SHELTON

Director, State Relations

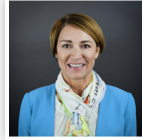
303.299.3667 | sshelton@ecs.org



MATT JORDAN

Director, Strategic Initiatives

303.299.3686 | mjordan@ecs.org



AMY SKINNER

Director, Communications

303.299.3609 | askinner@ecs.org



JAMIE KASPER

Director, Arts Education Partnership

202.844.6281 | jkasper@ecs.org



SIRI SMILLIE

Director, Policy

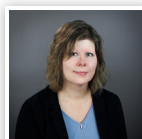
303.299.3628 | ssmillie@ecs.org



CHRISTOPHER M. MULLIN

Director, Strong Start to Finish

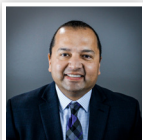
303.299.3608 | cmullins@ecs.org



JENNIFER THOMSEN

Director, Policy

303.299.3633 | jthomsen@ecs.org



MATT PADILLA

Chief Financial Officer

303.299.3693 | mpadilla@ecs.org

Appendix B

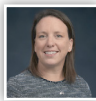
2019 Standing Committees

Executive Committee

CHAIR



Tom Wolf
Governor, Pennsylvania



Meg Snead
*Secretary of Policy and Planning,
Office of Gov. Tom Wolf, Pennsylvania*



Allison Jones
*Deputy Secretary of Policy and Planning,
Office of Gov. Tom Wolf, Pennsylvania*

VICE CHAIR



Wendy Horman
Representative, Idaho

TREASURER



Margie Vandeven
Commissioner of Education, Missouri

IMMEDIATE PAST CHAIR



Phil Bryant
Governor, Mississippi



Laurie Smith
*Executive Director State Workforce
Investment Board, Education Policy
Advisor, Office of Gov. Phil Bryant,
Mississippi*

ECS PRESIDENT



Jeremy Anderson
*President, Education Commission of
the States*

MEMBERS



Katy Anthes
Commissioner of Education, Colorado



Stephanie Bell
*Member, State Board of Education,
Alabama*



Peter Blake
*Director, State Council of Higher
Education, Virginia*



Ben Cannon
*Executive Director, Higher Education
Coordinating Commission, Oregon*



Shirley Weber
Assemblymember, California

Finance Committee

TREASURER and COMMITTEE CHAIR



Margie Vandeven

Commissioner of Education, Missouri

VICE CHAIR



Shirley Turner

Senator, New Jersey

MEMBERS



Bob Behning

Representative, Indiana



Tami Pyfer

Education Advisor, Office of Gov. Gary Herbert, Utah



Matthew Blomstedt

Commissioner of Education, Nebraska

National Forum Planning Committee

CHAIR



Wendy Horman

Representative, Idaho

VICE CHAIR



Nancy Norman

Education Consultant, Alaska

MEMBERS



Cara Harrison

Policy Advisor, Office of Gov. Gina Raimondo, Rhode Island



Don Schaible

Senator, North Dakota



Hanseul Kang

State Superintendent of Education, District of Columbia



Aaron Thompson

President, Council on Postsecondary Education, Kentucky



Jim McNiece

Member, State Board of Education, Kansas

Nominating Committee

CHAIR



Shirley Weber
Assemblymember, California

VICE CHAIR



Stephanie Bell
Member, State Board of Education, Alabama

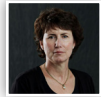
MEMBERS



Peter Blake
Director, State Council of Higher Education, Virginia



Allison Roberts
Senior Education Advisor, Office of Gov. Asa Hutchinson, Arkansas



Linda Fandel
Special Assistant for Education, Office of Governor Kim Reynolds, Iowa



Chuck Wiger
Senator, Minnesota

Appendix C

2019 Steering Committee and Commissioners

The Steering Committee is the primary policy-setting body of Education Commission of the States. Specifically, the Steering Committee adopts and approves statements and communications to implement, effectuate and share our work; considers policy recommendations from any person, committee or other body; discusses and debates education issues in order to provide major programmatic direction; recommends bylaw changes; and approves our strategic plan, annual budget and annual report.

Commissioners by state as of December 31, 2019. Steering Committee members are listed in **bold**.

ALABAMA

- **Stephanie Bell**, Member, Alabama State Board of Education
 - Kay Ivey, Governor, State of Alabama
 - Governor's Proxy: Nick Moore, Education Policy Advisor, Alabama Governor's Office
 - Eric Mackey, State Superintendent, Alabama State Department of Education
 - Arthur Orr, Chair, Finance and Taxation Education Committee, Alabama State Legislature
 - Bill Poole, Chair, House Ways and Means Education Committee, Alabama House of Representatives
 - Jim Purcell, Executive Director, Alabama Commission on Higher Education
 - Jeana Ross, Secretary, Alabama Department of Early Childhood Education

ALASKA

- **Nancy Norman**, Education Consultant, Norman Consultant Services
 - Mike Dunleavy, Governor, State of Alaska
 - Deena Bishop, Superintendent of Schools, Anchorage School District
 - Harriet Drummond, Chair, House Education Committee, Alaska House of Representatives
 - James Fields, Chair, Alaska Board of Education and Early Development
 - Michael Johnson, Commissioner, Alaska Department of Education and Early Development
 - Gary Stevens, Chair, Senate Education Committee, Alaska Senate

AMERICAN SAMOA

- **Moreli Niutaoa**, President, Kanana Fou Theological Seminary
 - Lolo Matalasi Moliga, Governor, Territory of American Samoa
 - Seth Galea'i, President, American Samoa Community College
 - Vaetasi Tu'umolimoli Moliga, Chair, House Education Committee, American Samoa House of Representatives
 - Etuale Viane, Director, Office of Catholic Education

ARIZONA

- **Doug Ducey**, Governor, State of Arizona
 - Sylvia Allen, Chair, Senate Education Committee, Arizona Senate
 - Walter Blackman, Arizona House of Representatives
 - Heather Carter, Chair, Higher Education and Workforce Development, Arizona Senate
 - Janice Palmer, Vice President & Director of Policy, Helios Education Foundation
 - Michelle Udall, Arizona House of Representatives
 - Rachel Yanof, Executive Director, Achieve60AZ

ARKANSAS

- **Asa Hutchinson**, Governor, State of Arkansas
 - Governor's Proxy: Allison Roberts, Senior Education Advisor, State of Arkansas
 - Lance Eads, State Senator, Arkansas Senate
 - Grant Hodges, Chair, House K-12, Vocational-Technical Institutions Subcommittee, Arkansas House of Representatives
 - Johnny Key, Commissioner of Education, Arkansas Department of Education
 - Maria Markham, Director, Arkansas Department of Higher Education
 - Sarah Moore, Board Member, Arkansas Department of Higher Education
 - Ivy Pfeffer, Deputy Commissioner, Arkansas Department of Education

CALIFORNIA

- **Shirley Weber**, Member, Assembly Education Committee, California Assembly
 - Gavin Newsom, Governor, State of California
 - Lande Ajose, Senior Policy Advisor for Higher Education, State of California: Office of the Governor
 - Ben Allen, Senator, California State Senate
 - Estela Bensimon, Professor and Director, University of Southern California
 - Linda Darling-Hammond, President, California State Board of Education
 - Tony Thurmond, State Superintendent of Public Instruction, California Department of Education

COLORADO

- **Katy Anthes**, Commissioner, Colorado Department of Education
 - Jared Polis, Governor, State of Colorado
 - Amie Baca-Oehlert, President, Colorado Education Association
 - Bill Jaeger, Vice President, Early Childhood & Policy Initiatives, Colorado Children's Campaign
 - Angie Paccione, Executive Director, Colorado Department of Higher Education
 - Kevin Priola, Vice Chair, Senate Education Committee, Colorado Senate
 - Emily Sirota, State Representative, State of Colorado

CONNECTICUT

- Ned Lamont, Governor, State of Connecticut
- Eric Berthel, Education, Ranking Member, Connecticut Senate
- Cheryl Dickinson, Professor Emeritus, Southern Connecticut State University
- Gail Lavielle, Ranking Member, House Education Committee, Connecticut House of Representatives
- Robert Sanchez, Chair, House Education Committee, Connecticut House of Representatives
- Hayley Zinn-Rowthorn, Owner, Educational Consultant, REALize Learning, LLC

DELAWARE

- **David Sokola**, Delaware Senate
- John Carney, Jr., Governor, State of Delaware
- Madeleine Bayard, Vice President, Policy and Practice, Rodel Charitable Foundation of Delaware
- Susan Bunting, Secretary of Education, State of Delaware
- Kevin Fitzgerald, Superintendent, Caesar Rodney School District
- John C. Gooden, President, M. Davis & Sons, Inc.
- Earl Jaques, State Representative, Delaware House of Representatives

DISTRICT OF COLUMBIA

- **Hanseul Kang**, State Superintendent, Office of the State Superintendent of Education
- Muriel Bowser, Mayor, District of Columbia Office of the Mayor
- Christopher Bell, Chairman, Board of Trustees, University of the District of Columbia
- David Grosso, Chair, Education Committee, Council of the District of Columbia
- Ronald Mason, Jr., President, University of the District of Columbia
- Phil Mendelson, Chair, Council of the District of Columbia
- Ruth Wattenberg, President, District of Columbia State Board of Education

FLORIDA

- Ron DeSantis, Governor, State of Florida
- Manny Diaz, Jr., Florida Senate
- Randy Fine, State Representative, Florida House of Representatives
- Bill Montford, Member, Senate Appropriations Subcommittee on Pre-K - 12 Education, Florida Senate
- Jennifer Sullivan, Chair, House Education, Florida Legislature

GEORGIA

- Brian Kemp, Governor, State of Georgia
- Wes Cantrell, Member, Education Committee, Georgia House of Representatives
- William S. Schofield, Superintendent, Hall County School District
- Freddie Powell Sims, Secretary, Education and Youth Committee, Georgia Senate
- Richard Woods, State Superintendent of Schools, Georgia Department of Education
- Steve Wrigley, Chancellor, University System of Georgia

HAWAII

- **Michelle Kidani**, Chair, Senate Education Committee, Hawaii Senate
- David Ige, Governor, State of Hawaii
- Joan Husted, Board of Directors, Education Institute of Hawaii
- Christina Kishimoto, State Superintendent of Schools, Hawaii Department of Education
- Carmelita Minami, Adjunct Professor, University of Hawaii at Manoa
- Alan Oshima, President and CEO, Hawaiian Electric Company
- Justin Woodson, Chair, House Education Committee, Hawaii House of Representatives

IDAHO

- **Wendy Horman**, Representative, Idaho House of Representatives
- Brad Little, Governor, State of Idaho
- Governor's Proxy: Gregory Wilson, Senior Policy Advisor for Education, State of Idaho
- Matt Freeman, Executive Director, Idaho State Board of Education
- Rod Gramer, President and CEO, Idaho Business for Education
- Dean Mortimer, Chair, Senate Education Committee, Idaho Senate

- Sherri Ybarra, Superintendent of Public Instruction, Idaho Department of Education

ILLINOIS

- **Carmen Ayala**, State Superintendent, Illinois State Board of Education
- Kimberly A. Lightford, Vice Chair, Senate Education Committee, Illinois Senate
- Darren Reisberg, Chairman, Illinois State Board of Education

INDIANA

- **Bob Behning**, Chair, House Education Committee, Indiana House of Representatives
- Eric Holcomb, Governor, State of Indiana
- Teresa Lubbers, Commissioner, Indiana Commission for Higher Education
- Jeff Raatz, Chair, Senate Education and Career Development Committee, Indiana Senate

IOWA

- **Linda Fandel**, Special Assistant for Education, State of Iowa
- Kim Reynolds, Governor, State of Iowa
- Jeff Edler, State Senator, Iowa Senate
- Eric Giddens, State Senator, Iowa Senate
- Tom Moore, State Representative, Iowa House of Representatives
- Cindy Winckler, State Representative, Iowa House of Representatives
- Ryan Wise, Director, Iowa Department of Education

KANSAS

- **Jim McNiece**, Member, District 10, Kansas State Board of Education
- Laura Kelly, Governor, State of Kansas
- Molly Baumgardner, Chair, Senate Education Committee, Kansas Senate
- Ann Brandau-Murguia, Regent, Kansas Board of Regents
- Steve Huebert, Representative, Kansas House of Representatives
- Cynthia Lane, Chair Governor's Council on Education
- Randy Watson, Commissioner, Kansas Department of Education

KENTUCKY

- **Aaron Thompson**, President, Kentucky Council on Postsecondary Education
- Matt Bevin, Governor, State of Kentucky
- Derrick Graham, Member, Educational Assessment & Accountability Review Subcommittee, Kentucky House of Representatives
- Gary Houchens, Associate Professor, Western Kentucky University
- Bob Hutchison, Owner, McDonalds of Eastern Kentucky
- Sherry Powers, Dean, Eastern Kentucky University
- Mike Wilson, State Senator, Kentucky Senate

LOUISIANA

- **John Bel Edwards**, Governor, State of Louisiana
- Conrad Appel, Member, Senate Education Committee, Louisiana Senate
- Steve Carter, Member, House Education Committee, Louisiana House of Representatives
- Kim Hunter Reed, Commissioner of Higher Education, Louisiana Board of Regents
- Donald Songy, Senior Education Policy Advisor, State of Louisiana
- Phyllis Taylor, Chairman and President, Patrick F. Taylor Foundation
- John White, State Superintendent of Education, Louisiana Department of Education

MAINE

- Janet Mills, Governor, State of Maine
- Duke Albanese, Senior Policy Advisor, Great Schools Partnership
- Victoria Kornfield, Chair, Joint Committee on Education and Cultural Affairs, Maine House of Representatives
- Rebecca Millett, Chair, Joint Standing Committee on Education and Cultural Affairs, Maine Senate

MARYLAND

- **Adrienne Jones**, Speaker of the House, Maryland House of Delegates
- Larry Hogan, Governor, State of Maryland
- Bill Ferguson, State Senator (46th District), Maryland General Assembly
- Kate Hetherington, President, Howard Community College
- Jeff Richmond, State of Maryland
- Karen Salmon, Superintendent of Schools, Maryland State Department of Education
- Gregory Schuckman, Assistant Vice President of Government Relations, University of Central Florida

MASSACHUSETTS

- Richard Freeland, President Emeritus, Northeastern University
- Matthew Malone, Superintendent, Fall River Public Schools
- James Peyser, Secretary of Education, State of Massachusetts
- Paul Toner, Executive Director, Teach Plus Massachusetts

MICHIGAN

- Gretchen Whitmer, Governor, State of Michigan
- **Sheila Alles**, Chief Deputy Superintendent, Michigan Department of Education
- Pamela Hornberger, Chair, House Education Committee, Michigan House of Representatives
- Emily Laidlaw, Policy Director to the Governor, State of Michigan
- Kim LaSata, Chair, Universities and Colleges Subcommittee, Michigan Senate
- Punita Thurman, Vice President, Program and Strategy, The Skillman Foundation
- Cassandra E. Ulbrich, President, Michigan State Board of Education

MINNESOTA

- **Charles Wiger**, Ranking Minority Member, Senate E-12 Finance and Policy Committee, Minnesota State Senate
- Tim Walz, Governor, State of Minnesota
- Governor's Proxy: Aara Johnson, Policy Advisor, Office of MN Governor
- Jim Davnie, Chair, Education Finance Division, Minnesota House of Representatives
- Carla Nelson, Chair, Senate E-12 Finance and Policy Committee, Minnesota State Senate
- Dennis Olson, Commissioner, Minnesota Office of Higher Education
- Mary Cathryn Ricker, Commissioner of Education, Minnesota Department of Education
- Dr. Lee-Ann Stephens, Racial Equity Instructional Coach, St. Louis Park School District

MISSISSIPPI

- **Phil Bryant**, Governor, State of Mississippi
- Richard Bennett, Chair, House Education Committee, Mississippi House of Representatives
- Josh Harkins, Chair, Universities and Colleges Committee, Mississippi Senate
- Nolan Mettetal, Chair, House Universities and Colleges Committee, Mississippi House of Representatives
- Alfred Rankins, Jr., Commissioner of Higher Education, Mississippi State Institutions of Higher Learning

- Gray Tollison, Chair, Senate Education Committee, Mississippi Senate
- Carey Wright, State Superintendent of Education, Mississippi Department of Education

MISSOURI

- **Margie Vandeven**, Commissioner of Education, Missouri Department of Elementary and Secondary Education
- Michael Parson, Governor, State of Missouri
- Dottie Bailey, Missouri House of Representatives
- John Jungmann, Superintendent, Springfield Public Schools
- Frank Killian, Superintendent, Richland R-1 School District
- Robert Knodell, Deputy Chief of Staff, State of Missouri
- Cindy O'Laughlin, Senator, Missouri Senate

MONTANA

- **Steve Bullock**, Governor, State of Montana
- Governor's Proxy: McCall Flynn, Governor's Education Policy Advisor, State of Montana
- Elsie Arntzen, Superintendent of Public Instruction, Montana Office of Public Instruction
- Seth Berglee, Chair, House Education Committee, Montana House of Representatives
- Elly Driggers, STARS Preschool Coach, State of Montana
- Alison Harmon, Dean, College of Education, Health and Human Development, Montana State University
- Keith Regier, Senator, Montana Senate
- Darlene Schottle, Chair, Montana Board of Public Education

NEBRASKA

- **Matthew Blomstedt**, Commissioner, Nebraska Department of Education
- Pete Ricketts, Governor, State of Nebraska
- Mike Baumgartner, Executive Director, Nebraska Coordinating Commission for Postsecondary Education
- John Bonaiuto, Government Relations Consultant, Nebraska Association of School Boards
- Mike Groene, Chair, Senate Education Committee, Nebraska Legislature
- Adam Morfeld, State Senator, Nebraska Legislature
- Dave Murman, State Senator, Nebraska Legislature

NEVADA

- **Brittney Miller**, Assemblywoman, Nevada Assembly
- Steve Sisolak, Governor, State of Nevada
- Marilyn Dondero Loop, Senator, Nevada State Legislature
- Jhone Ebert, Superintendent, Nevada Department of Education
- Selena Torres, Assemblywoman, Nevada Assembly
- Michael B. Wixom, Attorney at Law, Smith Larsen & Wixom
- Joyce Woodhouse, Senator, Nevada Senate

NEW HAMPSHIRE

- Chris Sununu, Governor, State of New Hampshire
- Governor's Proxy: DJ Bettencourt, Director of Policy, New Hampshire Office of the Governor
- Virginia Barry, Former Commissioner of Education
- Kathryn Dodge, Principal, Dodge Advisory Group
- Tom Horgan, President Emeritus, New Hampshire College and University Council
- Jay Kahn, Senator, New Hampshire Senate
- Mel Myler, Chair, House Education Committee, New Hampshire House of Representatives

NEW JERSEY

- **Shirley Turner**, Vice Chair, Education Committee, New Jersey Senate
- Philip Murphy, Governor, State of New Jersey
- Clinton Calabrese, Member, Assembly Higher Education Committee, New Jersey Assembly
- Susan Cole, President, Montclair State University
- Kristin Hennessy, Elementary School Teacher, Brielle Elementary School
- Peter Renwick, Former Director, Special Projects

NEW MEXICO

- **William Soules**, Chair, Senate Education Committee, New Mexico Senate
- Michelle Grisham, Governor, State of New Mexico
- Barbara Damron, PhD Program Director, University of New Mexico
- Matt Pahl, Executive Director, New Mexico Coalition for Charter Schools
- Gregorio Romero, Representative Romero, New Mexico House of Representatives
- Joseph Shepard, President, Western New Mexico University

NEW YORK

- **Johanna Duncan-Poitier**, Senior Vice Chancellor of Community Colleges & the Education Pipeline, The State University of New York System Administration
- Andrew Cuomo, Governor, State of New York
- Elizabeth Berlin, Executive Deputy Commissioner, New York State Department of Education
- Bethaida Gonzalez, Vice President for Community Engagement, Syracuse University
- Shelley Mayer, Chair, Senate Education Committee, New York State Senate

NORTH CAROLINA

- **D. Craig Horn**, Co-Chair, House Education Committee, North Carolina House of Representatives
- Roy Cooper, Governor, State of North Carolina
- Governor's Proxy: Geoff Coltrane, Governor, State of North Carolina
- Deanna Ballard, Chair, Senate Education Committee, North Carolina Senate
- Peter Hans, President, North Carolina Community College System
- Cecilia Holden, Director, Legislative Affairs & Special Initiatives, North Carolina State Board of Education
- Mark Johnson, Superintendent of Public Instruction, North Carolina Department of Public Instruction

NORTH DAKOTA

- **Donald Schaible**, Chair, Senate Education Committee, North Dakota Senate
- Doug Burgum, Governor, State of North Dakota
- Kirsten Baesler, Superintendent of Public Instruction, North Dakota Department of Public Instruction
- Mike Bitz, Superintendent, Mandan Public School District
- Mark Hagerott, Chancellor, North Dakota University System
- Travis Jordan, Superintendent, Beulah School District 27
- Mark Owens, Chair, House Education Committee, North Dakota House of Representatives

OHIO

- Mike DeWine, Governor, State of Ohio
- Peggy B. Lehnner, State Senator, Ohio Senate
- Don Jones, Chair, House Education Committee, Ohio House of Representatives

OKLAHOMA

- Kevin Stitt, Governor, State of Oklahoma
- Rhonda Baker, Oklahoma Legislature
- Joy Hofmeister, State Superintendent of Public Instruction, Oklahoma Department of Education
- Glen Johnson, Chancellor, Oklahoma State Regents for Higher Education
- **Marcie Mack**, Director, Oklahoma State Board of Career and Technical Education
- Michael Rogers, Secretary of State, Oklahoma Secretary of State
- Jason Smalley, Member, Appropriations Subcommittee on Education, Oklahoma Senate
- Gary Stanislawski, Majority Caucus Chair and Senate Education Chair, Oklahoma Senate

OREGON

- **Ben Cannon**, Executive Director, Oregon Higher Education Coordinating Commission
- Lindsey Capps, Chief Education Officer, Oregon Chief Education Office
- Colt Gill, Deputy Superintendent of Public Instruction, Oregon Department of Education
- Diego Hernandez, Member, Joint Committee on Student Success, Oregon House of Representatives
- Sherrie Sprenger, Member, Joint Committee on Student Success, Oregon House of Representatives
- Rob Wagner, Senate Education Committee Chair, Oregon State Senate

PENNSYLVANIA

- **Tom Wolf**, Governor, State of Pennsylvania
- Governor's Proxy: Meg Snead, Secretary of Policy and Planning, Commonwealth of Pennsylvania
- Andrew Dinniman, Minority Chair, Senate Education Committee, Pennsylvania Senate
- Wayne Langerholc, Pennsylvania Senate
- Russell Miller, Budget Analyst, Pennsylvania Senate
- Stanley Saylor, Chair, House Appropriations Committee, Pennsylvania House of Representatives
- David Volkman, Executive Deputy Secretary, Pennsylvania Department of Education

PUERTO RICO

- Ricardo Rossello, Governor, Commonwealth of Puerto Rico
- Guillermo Miranda Rivera, Chair, House Education, Puerto Rico House of Representatives

RHODE ISLAND

- **Gina Raimondo**, Governor, State of Rhode Island
- Governor's Proxy: Cara Harrison, Policy Advisor, Office of the Governor - Rhode Island
- Gregg Amore, Rhode Island House of Representatives
- Elizabeth Burke Bryant, Executive Director, Rhode Island KIDS COUNT
- Anna Cano Morales, Assistant Vice President, Community, Equity & Diversity, Rhode Island College
- Hanna Gallo, Chair, Senate Education Committee, Rhode Island Senate
- Angelica Infante-Green, Commissioner of Education, Rhode Island Department of Elementary and Secondary Education

SOUTH CAROLINA

- Henry McMaster, Governor, South Carolina Office of the Governor
- Larry Kobrovsky, Former Member, State Board of Education

SOUTH DAKOTA

- Kristi Noem, Governor, State of South Dakota
- Lana Greenfield, Chair, House Education Committee, South Dakota House of Representatives
- Rick Melmer, Director, Leadership South Dakota
- Alan Solano, Chair, Senate Education Committee, South Dakota Senate

TENNESSEE

- **Dolores Gresham**, Senator, Tennessee Senate
- Bill Lee, Governor, State of Tennessee
- John DeBerry, Jr., Representative, Tennessee House of Representatives
- Tammy Grissom, Executive Director, Tennessee School Boards Association
- Claude Pressnell, Jr., President, Tennessee Independent Colleges and Universities Association
- Lana Seivers, Dean, College of Education, Middle Tennessee State University
- Mark White, Chair, Education Committee, Tennessee General Assembly

TEXAS

- Greg Abbott, Governor, State of Texas
- Governor's Proxy: John Colyandro, Senior Advisor & Policy Director, State of Texas
- Dwayne Bohac, Member, Public Education Committee, Texas House of Representatives
- Peter Flores, Senator, Texas Legislature
- Dan Huberty, Chair, Committee on Public Education, Texas House of Representatives
- Mike Morath, Commissioner of Education, Texas Education Agency
- Larry Taylor, Chair, Senate Education Committee, Texas Senate

UTAH

- **Tami Pyfer**, Education Advisor, State of Utah
- Gary Herbert, Governor, State of Utah
- Sydnee Dickson, State Superintendent of Public Instruction, Utah State Office of Education
- Tracy Gruber, Director, Office of Childcare, State of Utah
- Ann Millner, Assistant Majority Whip, Utah Senate
- Val Peterson, Chair, House Education Committee, Utah House of Representatives
- Dave Woolstenhulme, Commissioner, Utah System of Higher Education

VERMONT

- Philip Baruth, Chair, Senate Education Committee, Vermont Senate
- Heather A. Bouchee, Deputy Secretary of Education, Vermont Department of Education
- Daniel French, Secretary of Education, Vermont Department of Education

VIRGIN ISLANDS

- **Albert Bryan, Jr.**, Governor, U.S. Virgin Islands
- Angeli Ferdschneider, Education Policy Advisor, U.S. Virgin Islands
- David Hall, President, University of the Virgin Islands
- Nereida Rivera O'Reilly, Member, Committee on Education and Workforce Development, Virgin Islands Senate

VIRGINIA

- **Peter Blake**, Director, State Council of Higher Education for Virginia
- Ralph Northam, Governor, Commonwealth of Virginia
- Steven Landes, Chair, House Education Committee, Virginia House of Delegates
- James Lane, Superintendent of Public Instruction, Virginia Department of Education
- Stephen Newman, Chair, Senate Education and Health Committee, Virginia Senate
- Joan Wodiska, President, Pioneer Management Consulting, Pioneer Management Consulting, LLC

WEST VIRGINIA

- **Steven L. Paine**, State Superintendent of Schools, West Virginia Department of Education
- James Justice, Governor, State of West Virginia
- Paul Espinosa, Chair, House Education Committee, West Virginia Legislature
- William Hosaflook, Superintendent, Wood County Schools
- Robert Plymale, Senator, West Virginia State Senate
- Sarah Stewart Stewart, Executive Director, Policy and Government Relations, West Virginia Department of Education
- Sarah Tucker, Chancellor, West Virginia Higher Education Policy Commission

WISCONSIN

- **Luther Olsen**, Chair, Senate Education Committee, Wisconsin Senate
- Tony Evers, Governor, State of Wisconsin
- John Reinemann, Legislative Staff, Wisconsin State Assembly
- Carolyn Stanford Taylor, State Superintendent, Wisconsin Department of Public Instruction
- Amy Traynor, Lead Teacher, Mondovi School District

WYOMING

- **Jillian Balow**, State Superintendent of Public Instruction, Wyoming Department of Education
- Mark Gordon, Governor, State of Wyoming
- David Northrup, Chair, House Education Committee, Wyoming House of Representatives
- Rachel Rubino, Case Manager, Albany County School District
- Walt Tribble, President, Northern Wyoming Community College District
- Kathy Vetter, President, Wyoming Education Association
- Jeff Wasserburger, Member, Senate Education Committee, Wyoming Senate

Appendix D

2019 Partners and Policy Support

2019 Education Commission of the States Partners

Platinum

BILL & MELINDA
GATES foundation

cognia™

Strada
EDUCATION NETWORK

The Wallace Foundation®

WALTON FAMILY
FOUNDATION

Gold

ACT®

AIR®
AMERICAN INSTITUTES FOR RESEARCH™

DATA RECOGNITION
DRC
CORPORATION™

CollegeBoard

NIET | NATIONAL INSTITUTE FOR
EXCELLENCE IN TEACHING

nwea™
Measuring What Matters

Pearson

TEXAS
INSTRUMENTS

Silver

BloomBoard

edmentum™

ETS®

KnowledgeWorks

MetaMetrics®

PLTW
PROJECT LEAD THE WAY

RENAISSANCE®

sas

TEACHERS of
TOMORROW
TEACHER CERTIFICATION™

WGU

Bronze

BARR™
Same Students. Same Teachers.
Better Results.

Curriculum
Associates®

Lexia
A Rosetta Stone® Company

Questar.

2019 Education Commission of the States Policy Support

- Alliance for Early Success
- Ascendium Education Group
- Bill & Melinda Gates Foundation
- Chan Zuckerberg Initiative
- The Joyce Foundation
- The Kresge Foundation
- Heising-Simons Foundation
- Hewlett Foundation
- National Endowment for the Arts
- Robert Wood Johnson Foundation
- Strada Education Network
- U.S. Department of Education
- The Wallace Foundation
- Walton Family Foundation

Appendix E

Budget and Financial Summary

Statement of financial position for year ending Dec. 31, 2019.

Income Statement

REVENUES

GRANTS/CONTRACTS	12,894,618
SPONSORSHIP FUNDING/REGISTRATION	886,350
STATE FEES	3,204,081
GAINS/LOSS - INVESTMENTS	1,075,450
OTHER	6,201
TOTAL REVENUE	\$18,066,700

Expenses

SALARIES AND BENEFITS	6,453,194
OTHER OPERATING EXPENSES	8,625,744
TOTAL EXPENSES	\$15,018,938

Balance Sheet

ASSETS

CURRENT ASSETS	15,488,857
PROPERTY, PLANT AND EQUIPMENT	688,696
TOTAL ASSETS	\$16,177,553

Liabilities

CURRENT LIABILITIES	412,524
ACCRUALS	281,749
DEFERRED REVENUE	212,179
DEFERRED RENT	260,419
TOTAL LIABILITIES	\$1,166,871

Net Assets

INVESTED IN CAPITAL ASSETS	688,696
OPERATING RESERVE	1,602,041
TEMPORARILY RESTRICTED	11,031,649
UNDESIGNATED	1,688,296
TOTAL NET ASSETS	\$15,010,682

Audited financial statements are available upon request.



EDUCATION COMMISSION

OF THE STATES

Your education policy team.

BEST OF 2019

TOP Policy Reports



State Postsecondary Governance Structures

Governors' Top Education Priorities in 2019 State of the State Addresses

Policy Considerations for STEAM Education

Using State Data Systems to Create an Information Culture in Education

Strengthening the Early Childhood Education Continuum

TOP 50-State Comparisons



High School Graduation Requirements

K-12 School Safety

Dual/Concurrent Enrollment Policies

K-12 Funding

K-12 Special Education Funding

TOP Blog Posts



What Are the Trending Education Topics in States in 2019?

When Medical Marijuana Meets School Drug Policy, What Can States Do?

The Arts and CTE: Building Tomorrow's Creative Workforce Today

Connecting the Dots: Aligning Attainment Goals to the Workforce

Debt-Free College and Free College: What's the Difference?

**NPT'S BEST NONPROFITS TO WORK FOR
FOUR YEARS IN A ROW!**



WE WERE PLEASED TO WELCOME



NEW COMMISSIONERS IN 2019.

Education Commission of the States
700 Broadway Suite 810 Denver, CO 80203
ecs.org | @EdCommission

© 2019 by Education Commission of the States. All rights reserved.

